

PUBLIC CONTRACT PURCHASING

PLAYGROUND EQUIPMENT SAFETY SURFACING OUTDOOR SITE FURNISHINGS DSA SHADE SHELTERS

DAVE BANG ASSOCIATES, INC.

1-800-669-2585

FAX 1-800-729-2483

COLTON JOINT UNIFIED SCHOOL DISTRICT
1212 VALENCIA DRIVE, COLTON, CA 92324

BID NUMBER 15-04 **PLAYGROUND EQUIPMENT AND DSA SHADE SHELTERS**

Piggyback Clause: For the term of the contract and any mutually agreed extensions pursuant to this request for bids, at the option of the vendor, other school districts and community college districts, any public corporation or agency, including any county, city or town in the State of California, may purchase, lease-purchase, the identical item(s) at the same price and upon the same terms and conditions pursuant to Public Contract Code 20118 (K-12) and 20652 (Community Colleges).

The Colton Joint Unified School District waives its right to require such other districts and offices to draw their warrants in the favor of the District as provided in said Code sections.

Acceptance or rejection of this clause **WILL NOT** affect the outcome of this bid.

Piggyback option granted



(please initial)

Piggyback option not granted

The undersigned has read all of the conditions, instructions and specifications, is familiar with, understands, and will conform by furnishing and delivering the goods and/or services at the prices quoted above.

BID PRICING

COLTON JOINT UNIFIED SCHOOL DISTRICT
1212 Valencia Drive
Colton, CA 92324

PROPOSAL FORM FOR BID #15-04
PRICING INFORMATION

<u>Item</u>	<u>Quantity</u>	<u>Brand/Model Supplied</u>	<u>Unit Cost</u>	<u>Shipping</u>	<u>Total</u>
1.	1 each	Playworld Systems #C15004CH -As Specified	\$47,437.-	\$4,278.-	\$51,715.-
2.	1 each	Playworld Systems #C15003SP -As Specified	\$32,716.-	\$3,323.-	\$36,039.-
3.	1 each	Playworld Systems #C15001SP -As Specified	\$21,949.-	\$2,325.-	\$24,274.-
4.	1 each	Americana Building Products #IL1058-13 CAC, Illin: 10:58' -As Specified DSA PC# 02-113840	\$25,865.-	\$1,724.-	\$27,589.-

TOTAL BASE BID AMOUNT (Items 1-4)

\$139,617.00

DO NOT INCLUDE SALES TAX OR INSTALLATION ON THE PROPOSAL FORM

COLTON JOINT UNIFIED SCHOOL DISTRICT
1212 Valencia Drive
Colton, CA 92324

PROPOSAL FORM FOR BID #15-04
ADDITIONAL PRICING INFORMATION

Optional: Bidders may list percent discounts from their current, general published component pricing catalog for playground equipment, or specified catalogs for their full line of products, if they wish. The District reserves the right to accept or reject any general discount when making any award.

Manufacturer Submitted	% Discount	Shipping	Minimum Freight
		Less than 1K lbs: \$2.05/LB	
Playworld Systems	17.0%	more than 1K lbs: \$1.72/LB	\$1,000.-
		more than 2K lbs: \$1.47/LB	
Playworld Shipping Cont...		more than 5K lbs: \$1.28/LB	
Wabash	15.0%	Less than 1K lbs: \$2.35/LB	\$1,000.-
		more than 1K lbs: \$1.96/LB	
		more than 2K lbs: \$1.68/LB	
Wabash Shipping cont...		more than 5K lbs: \$1.46/LB	
PW Athletic	15.0%	less than 1K lbs: \$1.40/LB	\$1,000.-
		more than 1K lbs: \$1.15/LB	
		more than 2K lbs: \$1.00/LB	
Americana Building Products	5.0%	\$.58/LB	\$ 600.-
Pro-tect Turf	5.0%	Included	N/A
Tot Turf	5.0%	Included	N/A
Robertson Recreational Surfaces	5.0%	\$.65/LB	\$1,000.-
Custom Canopies, Inc.	5.0%	\$.20/LB	\$ 400.-
		less than 1K lbs: \$1.40/LB	
Patterson-Williams	10.0%	more than 1K lbs: \$1.15/LB	\$1,000.-
		more than 2K lbs: \$1.00/LB	
Zeager Brothers	5.0%	\$800 per 100 cubic yards	\$1,000.-
		Less than 1K lbs: \$2.35/LB	
Urbanscape	10.0%	more than 1K lbs: \$1.96/LB	\$1,000.-
		Less than 1K lbs: \$2.05/LB	
Playsimple	5.0%	more than 1K lbs: \$1.72/LB	\$1,000.-
		Less than 1K lbs: \$2.05/LB	
LifeTrail	5.0%	more than 1K lbs: \$1.72/LB	\$1,000.-
		Less than 1K lbs: \$2.05/LB	
Neos	5.0%	more than 1K lbs: \$1.72/LB	\$1,000.-

COLTON JOINT UNIFIED SCHOOL DISTRICT
1212 Valencia Drive
Colton, CA 92324

PROPOSAL FORM FOR BID #15-04
ADDITIONAL PRICING INFORMATION (cont.)

Optional: Bidders may list percent discounts from their current, general published component pricing catalog for playground equipment, or specified catalogs for their full line of products, if they wish. The District reserves the right to accept or reject any general discount when making any award.

<u>Manufacturer Submitted</u>	<u>% Discount</u>	<u>Shipping</u>	<u>Minimum Freight</u>
LA steelcraft	10.0%	\$.58/LB	\$ 1,000.-
Kay Park	10.0%	\$.58/LB	\$ 600.-
Most Dependable Fountains	5.0%	\$.50/LB	\$ 600.-
HAWS	5.0%	\$.50/LB	\$ 600.-
Jensen Swing Products	5.0%	\$.32/LB	\$ 400.-
Childforms	5.0%	\$.58/LB	\$ 600.-
National Recreation	10.0%	\$.67/LB	\$ 700.-
Playworld Systems, Inc. Family of Products	5.0%	Less than 1K lbs: \$2.05/lb more than 2K lbs: \$1.72/lb	\$ 1,000.-
Sunports	5.0%	\$.63/LB	\$ 600.-
Recycled Wood Products	5.0%	\$ 800 per 100 cubic yards	\$ 1,000.-
Artesia Sandust Products	5.0%	\$ 800 per 100 cubic yards	\$ 1,000.-
Sof"Fall	5.0%	\$ 800 per 100 cubic yards	\$ 1,000.-
Sof' Solutions	5.0%	\$.65/LB	\$ 600.-
Sof' Surfaces	5.0%	\$.65/LB	\$ 600.-
No Fault	5.0%	\$.65/LB	\$ 600.-
Turboscape	5.0%	\$ 25 per cubic yard	\$ 1,000.-

PIGGYBACK CLAUSE

COLTON JOINT UNIFIED SCHOOL DISTRICT
1212 Valencia Drive
Colton, CA 92324

PROPOSAL FORM FOR BID #15-04
PIGGYBACK CLAUSE AND SIGNATURE PAGE

Piggyback Clause: For the term of the contract and any mutually agreed extensions pursuant to this request for bids, at the option of the vendor, other school districts and community college districts, any public corporation or agency, including any county, city or town in the State of California, may purchase, lease-purchase, the identical item(s) at the same price and upon the same terms and conditions pursuant to Public Contract Code 20118 (K-12) and 20652 (Community Colleges).

The Colton Joint Unified School District waives its right to require such other districts and offices to draw their warrants in the favor of the District as provided in said Code sections.

Acceptance or rejection of this clause **WILL NOT** affect the outcome of this bid.

Piggyback option granted

JB

(please initial)

Piggyback option not granted

The undersigned has read all of the conditions, instructions and specifications, is familiar with, understands, and will conform by furnishing and delivering the goods and/or services at the prices quoted above.

<u>Dave Bang Associates Inc. of CA</u>		<u>PO Box 1088</u>
Name of Company	Address	
<u>Tustin, CA 92781</u>	<u>800-669-2585</u>	<u>800-729-2483</u>
City, State, Zip Code	Telephone	FAX
<u>N/A</u>	<u>30-60</u>	
Cash Discount (if any)	Delivery (in days)	
<u>[Signature]</u>	<u>President</u>	
Signature	Title	

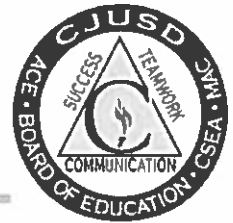
MINUTES /

ADVERTISING

Colton Joint Unified School District

Jerry Almendarez, Superintendent

Jaime R. Ayala, Assistant Superintendent, Business Services



Certification of Minutes

The Board of Education of the Colton Joint Unified School District met in Regular Session on Thursday, March 12, 2015, at 6:00 p.m. in the Board Room at the 18829 Orange Street, Bloomington, California 92316.

Members Present: 6

Members Absent: 1

Action Section – Action Items

Section 8

On motion of Board Member Cenicerros and Board Member Taylor and carried on a 6-0 vote, (Board Member Tabera absent) the Board approved Action Item 8.9 as presented.

#8.9

Award of Bid #15-04 to Dave Bang Associates for Playground Equipment and DSA Shade Shelters

I, Jaime R. Ayala, Assistant Superintendent, Business Services, for the COLTON JOINT UNIFIED SCHOOL DISTRICT, do hereby certify that the above is a true and correct copy of the motion duly made, adopted, and entered on the minutes of the Governing Board of said District.

By: _____

March 16, 2015

**Agenda Item Details**

Meeting	Mar 12, 2015 - Board of Education Regular Meeting Agenda
Category	8. Action Session - Action Items
Subject	8.9 Award of Bid #15-04 to Dave Bang Associates for Playground Equipment and DSA Shade Shelters
Access	Public
Type	Action - Business Services Division
Preferred Date	Mar 12, 2015
Absolute Date	Mar 12, 2015
Dollar Amount	\$0,000.00
Budget Source	General Fund or Self Insurance Fund 67 Expenditure: \$50,000 as needed
Recommended Action	That the Board award Bid #15-04 to the lowest responsible bidder, Dave Bang Associates, Inc., for playground equipment and DSA shade shelters, as presented.
Goals	1. Communication Facilities/Support Services Budget Planning

Public Content

Bids for playground equipment and DSA shade shelters were opened on February 11, 2015. The bid was conducted in accordance with Public Contract Code 20111 and advertised in accordance with Public Contract Code 20112. One vendor submitted and bid.

This bid was conducted to meet the needs of the District on an as needed basis. The District currently has fifty-eight separate play equipment areas on our campuses. The main use of this bid will be to maintain the safety of our playground's fall surface material. Properly maintained engineered wood fiber has the highest impact attenuation rating out of all fall surfaces available. Impact attenuation is the ability of a fall surface to absorb and dissipate the impact of a child's fall from play equipment to the safety surface below. Fall surface materials are rated by the Consumer Products Safety Commission (CPSC).

The District will replenish engineered wood fiber fall surface material as needed in play equipment areas in the District. Cost to replenish specific sites varies due to the varying sizes of play areas at each site.

Executive Content

SAN BERNARDINO COUNTY SUN

This space for filing stamp only

4030 N GEORGIA BLVD, SAN BERNARDINO, CA 92407
Telephone (909) 889-9666 / Fax (909) 885-1253

DAVID BEESON
COLTON JOINT UNIFIED SCHOOL DIST.
1212 VALENCIA DRIVE
COLTON, CA - 92324

SBS #: 2710738

PROOF OF PUBLICATION

(2015.5 C.C.P.)

State of California)
County of SAN BERNARDINO) ss

Notice Type: BIDS - NOTICE INVITING BIDS-SB

Ad Description:


Playground Equipment and DSA Shade Shelters

I am a citizen of the United States and a resident of the State of California; I am over the age of eighteen years, and not a party to or interested in the above entitled matter. I am the principal clerk of the printer and publisher of the SAN BERNARDINO COUNTY SUN, a newspaper published in the English language in the city of SAN BERNARDINO, county of SAN BERNARDINO, and adjudged a newspaper of general circulation as defined by the laws of the State of California by the Superior Court of the County of SAN BERNARDINO, State of California, under date 06/20/1952, Case No. 73084. That the notice, of which the annexed is a printed copy, has been published in each regular and entire issue of said newspaper and not in any supplement thereof on the following dates, to-wit:

01/27/2015, 02/03/2015

Executed on: 02/03/2015
At Riverside, California

I certify (or declare) under penalty of perjury that the foregoing is true and correct.


Signature

NOTICE INVITING BIDS
Notice is hereby given that the Board of Trustees of the Colton Joint Unified School District will receive sealed bids to be delivered to the Purchasing Department, 1212 Valencia Drive, Colton, CA 92324 on or before 10:00 a.m., on February 11, 2015, for Playground Equipment and DSA Shade Shelters in accordance with specifications contained in Bid #15-04, which is available at the above stated address.
The Governing Board of said school district reserves the right to accept or reject any or all bids or parts thereof, to be the sole judge of merits and qualifications of the items or services offered and the ability of the bidder to responsibly perform; to waive any irregularities or informalities in any bid or in the bidding procedure and may accept other than the lowest bid offered.
Dave Beeson
Purchasing and Warehouse Director
1/27, 2/3/15
SBS-2710738#



* A 0 0 0 0 0 3 6 6 5 8 5 2 *

BID

DOCUMENT

NOTICE INVITING BIDS

Notice is hereby given that the Board of Trustees of the Colton Joint Unified School District will receive sealed bids to be delivered to the **Purchasing Department**, 1212 Valencia Drive, Colton, CA 92324 on or before **10:00 a.m.**, on **February 11, 2015**, for **Playground Equipment and DSA Shade Shelters** in accordance with specifications contained in Bid **#15-04**, which is available at the above stated address.

The Governing Board of said school district reserves the right to accept or reject any or all bids or parts thereof, to be the sole judge of merits and qualifications of the items or services offered and the ability of the bidder to responsibly perform; to waive any irregularities or informalities in any bid or in the bidding procedure and may accept other than the lowest bid offered.

Dave Beeson
Purchasing and Warehouse Director

To be published on:
January 27, 2015 and
February 3, 2015.

General Bid Instructions and Conditions

1. **Preparation of Bid:** Submit bid on District form in a separate sealed envelope with project identification name on the outside. Bid must be returned to the Purchasing Department of the Colton Joint Unified School District on or before the day and hour specified. Faxed bids will not be accepted.
2. **Responsibility:** All bids shall be signed with the firm name and by a responsible officer or employee. It is the sole responsibility of the bidder to see that his bid is received in the Purchasing Department, in proper time. Bids received after this time will be returned unopened.
3. **Corrections:** All prices and notations shall be typewritten or in ink. No erasures will be permitted. Mistakes may be crossed out and corrections made adjacent to the error and shall be initialed in ink by the person signing the bid. Verify bids before submission. Once opened, they cannot be corrected or withdrawn.
4. **Acceptance:** Prices shall be stated in units specified only. Both the unit price and extensions must be shown. In case of a discrepancy between the unit price and extension, the unit price will be considered correct
5. **Award of Contract:** The District reserves the right to accept or reject any or all bids, to accept or reject any item thereon, to waive any irregularities in the bid or bidding. The District will act as the sole judge of the merit and qualifications of the materials offered and accept whatever bid is deemed to be in the best interest of the District. **The award of the contract, if made by the District, will be to the lowest responsible bidder based on the total base bid amount.**
6. **Brand Name and Number:** Brands of equal make or type which are substantially the same or better than those specified are acceptable. Brands as listed on the bid form are given for descriptive purposes only. The bidder shall state the brand name and number in the column provided. If none is indicated, it shall be understood that the bidder is quoting on the exact brand and number specified in the bid form.

The playground layout shown in the plan view is based upon equipment and measurements from Playworld Systems, with age specific components. Acceptable manufacturer is Playworld Systems or equal. Other products may be considered equal if all of the parameters, specifications and design intent of the drawings are met and the provisions contained in paragraph 7, "Product Substitutions" are met. If the playground equipment bid is based on product other than Playworld Systems and the product is determined by the District to be not equal, the bid will be rejected.

The acceptable manufacturer for shade shelters is American Building Products or equal. Other products may be considered equal if all of the parameters, specifications and design intent of the drawings are met and the provisions contained in paragraph 7,

"Product Substitutions" are met. If the shade shelter bid is based on product other than Americana Building Products and the product is determined by the District to be not equal, the bid will be rejected.

7. **Product Substitutions:** Nothing in this specification is intended to limit competition or to specify a particular manufacturer. Where a manufacturer's name or trade name is specified the intent is to establish quality, specifications or utility of the items desired; and an item of equal quality and meeting equal specification and utility may be substituted subject to the following provisions:

Playground Equipment - All substitutions must be reviewed and approved by the District. For this purpose, submit with the bid, in duplicate, a list containing a description of each proposed substitute item or material along with the manufacturer's name, contact and phone number. The list must include a match, item for item, for those listed in the specifications for Playworld Systems in tabular form with a plan view and 3-D view of the layout. Attach to the list sufficient data, drawings, samples, literature or other detailed information that will demonstrate to the District that the proposed substitute is equal in quality, utility and appearance to the material specified. Failure of the bidder to submit proposed substitutions for approval in the manner described above, and with the sealed bid response, shall be sufficient cause for disapproval by the District of any substitutions proposed.

Shade Shelters - All substitutions must be reviewed and approved by the District. For this purpose, submit with the bid, in duplicate, a list containing a description of the proposed substitute item or material along with the manufacturer's name, contact and phone number. The list must include a match, item for item, for those listed in the specifications for Americana Building Products in tabular form. Attach to the list sufficient data, drawings, samples, literature or other detailed information that will demonstrate to the District that the proposed substitute is equal in quality, utility and appearance to the material specified. Failure of the bidder to submit proposed substitutions for approval in the manner described above, and with the sealed bid response, shall be sufficient cause for disapproval by the District of any substitutions proposed.

8. **Design and Fabrication:** Playground equipment and modular units submitted for consideration shall be equivalent in design, layout, deck size, post size, clamping/fastening system, deck/slide/climber height, ADA accessibility, appearance, color and construction detail of the playground equipment, structure or modular unit specified in the drawings. Reasonable variations in size/height (no more than +/- 6") and manufacturer's standard colors may be allowed at the District's discretion. Color schemes are to match as closely as possible to the original specified colors. Play value and safety features of components must be equal or superior to specified design as judged by the District. Variations resulting in the reduction of safety will not be considered equal.

9. **Samples:** Samples of items, when required, shall be furnished free of expense to the District, and may be retained by the District for the purpose of comparing against material delivered by the successful bidder. The final decision as to whether the material or product is equal to that specified shall be made by the District.

9. **Hold Harmless Clause:** The supplier shall hold harmless and indemnify the District and the Board of Education, its officers and employees, from every claim or demand which may be made by reason of:

- a. Any injury to person or property sustained by the supplier or by any person, firm, or corporation employed directly or indirectly by him upon or in connection with his performance under the purchase order, however caused.
- b. Any injury to person or property sustained by any person, firm, or corporation, caused by any act, neglect, default, or omission of the supplier or of any person, firm, or corporation, directly or indirectly employed by him upon or in connection with his performance under the purchase order.
- c. Any liability that may arise from the furnishing or use of any copyrighted or uncopyrighted composition, secret process, or patented or unpatented invention, under the purchase order.

10. **Delivery:** The vendor shall be responsible for delivery and shall pay all costs including drayage, freight, and packing, for delivery F.O.B. to the District warehouse or to other points within the Colton Joint Unified School District as may be specified in this bid form. Each item shall be packed and shall be accompanied by a packing list and purchase order number. The right is reserved to reject and return at the risk and expense of the vendor such portion of any shipment which may be defective or fail to comply with specifications, without invalidating the remainder of the order.

11. **Taxes:** INCLUDE California State Sales Tax. DO NOT include Federal Excise Tax as school districts are exempt therefrom.

12. **Discount:** Cash discounts, when stated on the bid, shall be allowed on all payments that are processed by the District with reasonable promptness after acceptance of material and receipt of vendor's invoice in triplicate. Cash discounts for a period of less than thirty (30) days will not be considered in determining low bidder.

13. **Non-Bidders:** If a bid is not made, please notify the District if you wish to remain on the mailing list.

14. **Interpretations of Bid Documents:** All interpretations of the bid conditions and/or specifications shall be made only by written addendum. The District shall not be responsible for any other explanation or interpretation of the bid document.

Requests for interpretations of the bid conditions and/or specifications shall be made to the District no later than four (4) business days prior to the bid opening date.

15. **Safety Regulations:** All equipment and supplies furnished, and/or work performed, shall meet all applicable safety regulations of the Division of Occupational Safety and Health of the State of California and Safety and Health Codes of the State of California. All supplies purchased must conform with Education Code 32060, which restricts the use of toxic supplies requiring that they bear a label informing the user of the presence of hazardous ingredients, the potential health effects, and instructions for safe use. Material Safety Data Sheet must accompany invoice on these items.

16. **Affirmative Action:** The bidder in responding affirms that they are an Equal Opportunity Employer. No discrimination shall be made in the employment of persons upon public works in this project because of the sex, race, color, national origin or ancestry, religion, or handicap of such personnel.

17. **Default by Supplier:** If the supplier fails or neglects to furnish or deliver any of the materials, supplies, or services at the prices stated and in accordance with the terms and conditions of the bid and purchase order, the District may cancel the entire purchase order or any items affected by such default; may procure the articles or services from other sources and may deduct from any unpaid balance due the supplier or collect against the security, excess costs so paid. The prices paid by the District at the time such purchases are made shall be considered the prevailing market prices.

18. **Non-Discrimination:** In response to this bid, the vendor affirms that it is an equal opportunity employer, and does not discriminate in regard to race, color, religion, sex, or national origin.

19. **Pricing – Term of Contract:** Minimum contract term is two (2) years. Quoted prices for additional equipment must stay in effect for two (2) years after award of bid and may be extended upon mutual consent of the District and the vendor for an additional three (3), one year periods (total five years) in accordance with provisions contained in Education Code Sections 17596 (K-12) and 81644 (Community Colleges). A maximum price increase of five percent (5%) per contract term may be negotiated subject to existing market conditions. In the event of a general price decrease, the District reserves the right to revoke the bid unless the decrease is passed onto the District.

20. **Multi-year Extensions:** Subject to the provisions of **Paragraph 19** (above), and pursuant to Education Codes 17596 and 81644, this bid may be extended by mutual consent expressed in writing for three (3) additional, one (1) year increments (total potential bid life of five years from Board of Education award).

21. **No Minimum or Maximum Quantities, Order Charges, or Limitations Upon Number of Orders:** The District does not guarantee orders in the quantities shown on

the bid form, nor shall the District be required to limit its orders to only those figures. **This is an indefinite-quantity bid.** Bidders shall not specify minimum or maximum quantities or charges for specific order types. Unlimited orders within the term of the contract shall be allowed to the awarding district and/or districts represented by this bid at prices quoted.

22. **Piggyback Clause:** For the term of the contract and any mutually agreed extensions pursuant to this request for bids, at the option of the vendor, other school districts and community college districts, any public corporation or agency, including any county, city or town in the State of California, may purchase or lease-purchase, the identical item(s) at the same price and upon the same terms and conditions pursuant to Public Contract Code 20118 (K-12) and 20652 (Community Colleges).

The Colton Joint Unified School District waives its right to require such other districts and offices to draw their warrants in the favor of the District as provided in said Code sections.

Acceptance or rejection of this clause **WILL NOT affect the outcome of this bid.**

23. **Insurance Requirements:** The Contractor shall secure and maintain from an admitted California surety, the minimum amounts of coverage listed below to protect against claims that may arise from operations under the contract, whether such operations are by the Contractor or anyone directly or indirectly employed by them. All Contractors shall have Commercial General Liability (CGL) and Commercial (Business) Automobile Liability (CA or BA). Workers Compensation (WC) shall also be provided unless exempted as outlined below. Under some circumstances, the District may also require Errors and Omissions (E&O), excess, or other coverage whenever exposure warrants, as determined by the District.

Failure to obtain or maintain the required coverage or furnish the required certificates, endorsements, or policies shall constitute a material breach of this agreement and may result in termination of the agreement.

Evidence of Insurance

Satisfactory Evidence of Insurance shall be provided to the District. All Certificates and endorsements shall be signed by an authorized representative of the insurance carrier. The District reserves the right to require the original Certificate(s)/endorsement(s) and/or to require copies of the Contractor's insurance policy(ies).

Insurance Certificates are required to have a 30-day non-renewal/cancellation notice clause and shall include NAMED ADDITIONAL INSURED ENDORSEMENTS as indicated below.

Satisfactory Evidence of Insurance must be submitted and approved by the District prior to providing any product or service covered under this agreement.

Additional Insureds

The CGL and CA/BA policies shall be endorsed to name the following as additional insureds:

- ✓ Colton Joint Unified School District, its directors, officers, employees, volunteers and Board members.

Rating of Insurer

All policies shall be from admitted insurers with an A.M. Best rating of at least A-, VII, or better, except that for W/C coverage, the California State Compensation Insurance Fund (State Fund) is acceptable. The District reserves the right to approve other carriers if found acceptable to the District Department of Risk Management and Health Benefits.

Minimum Coverages

Commercial General Liability (CGL)

Includes both bodily injury and property damage

\$1,000,000 per occurrence

\$ 100,000 fire damage

\$ 5,000 medical expenses

\$1,000,000 personal and advertisement injury

\$3,000,000 general aggregate*

\$3,000,000 products/completed operation aggregate

*\$3,000,000 general aggregate may be waived if the policy is endorsed stating that the \$1,000,000 occurrence applies solely and separately to the Colton Joint Unified School District and the waiver is approved by the Colton Joint Unified School District.

Commercial (Business) Automobile Liability (CA or BA)

All owned, hired and non-owned vehicles

\$1,000,000 combined single limit

Workers Compensation (WC)

Part A – Statutory Limits

Part B – Employer's Liability - \$1,000,000/\$1,000,000/\$1,000,000

Exemption: Sole proprietors with no employees are exempt from providing WC coverage. Contractors meeting this exemption requirement must provide the District with evidence of their exemption.

24. **Contractor License Requirements:** All bidders must be registered with the California State Contractors License Board prior to the bid opening. Each bidder must possess a current **Class D-34 Prefabricated Equipment license**.

Additionally, all bidders must be registered with the California Department of Industrial Relations prior to bid opening in accordance with SB 854.

SPECIAL CONDITIONS OR INSTRUCTIONS

BID #15-04

1. Quantities shown are approximate. The Colton Joint Unified School District does not guarantee them as minimum or maximum quantities to be furnished.
2. All deliveries will be F.O.B. destination. Specific destinations within the District will be noted on individual purchases orders as purchases are made.
3. Bid prices must remain in effect for two (2) years from the bid award date. See paragraphs 19-21 of the General Bid Instructions and Conditions.
4. Successful bidder will be required to replace any damaged items before acceptance is made by the District.
5. **Optional:** Where indicated on the bid proposal form, bidders may also list percent discounts from their current, general published component pricing catalog for playground equipment, or specified catalogs for their full line of products, if they wish. The District reserves the right to accept or reject any general discount when making any award.

PLAYGROUND EQUIPMENT GENERAL SPECIFICATIONS

1. All playground equipment bid must be International Play Equipment Manufacturers Association (IPEMA) certified. In addition, the manufacturers of the play equipment must be members of the International Play Equipment Manufacturer's Association (IPEMA).

Bidders must submit proof of these requirements with their sealed bid response.

2. All playground equipment must meet the most current American Society for Testing and Materials (ASTM) standard F1487 and the requirements contained in the Consumer Product Safety Commission (CPSC) Handbook for Public Playground Safety.

Bidders must submit proof of these requirements with their sealed bid response.

3. To ensure proven quality control standards, the manufacturer of the play equipment must have ISO 9001 certification.

Bidders must submit proof of this requirement with their sealed bid response.

4. All playground designs must meet or exceed the most current American's with Disabilities Act (ADA) "Accessibility Guidelines for Play Areas".

Bidders must submit proof of this requirement with their sealed bid response.

5. A minimum warranty as follows must be offered:

Limited Warranty Time Periods

- **LIFETIME** on steel and aluminum posts, stainless steel hardware, clamps, deck hangers, post caps, and cast aluminum parts, except as otherwise specified below.

- **25 YEARS** on Spring Mates® aluminum castings.

- **15 YEARS** on all perforated steel decks and stairs, steel rails, stationary weldments, rotationally-molded and sheet plastic components, recycled plastic lumber, roof panels, stainless steel slides, aluminum slide, and PlayWeb® tubular steel parts, except as otherwise specified below by product family type.

- **10 YEARS** on fiberglass signage, RockBlocks® handholds, accessible swing seats, steel-core cable, all Fun Centers™ and FirstPlay™ play structures, and pre-cast PolyFiberCrete® or reinforced concrete products. The warranty for pre-cast concrete products does not cover minor chips, hairline cracks or efflorescence.

- **5 YEARS** on all PlaySimple® play structures; CushionPlay™; DropZone Tower™; LiveWire Zip Line™; AeroGlider™; Border Timbers™; swing seats; steel coil and C springs; and site amenities including all benches, tables, litter receptacles and bike racks. All motion/moving play components and parts, except as listed below.

- **2 YEARS** on NEOS®, electronic based play products, GardenSoxx® polyethylene bags, swing chain, swing clevises, swing galvanized attachment hardware, and any other materials not covered above. (*An extended 3-year NEOS parts-only warranty is available for purchase, providing a total coverage of five years.)

Bidders must submit proof of these warranties with their sealed bid response.

6. Specifications and site drawings for the playground equipment requested are included with this bid packet for your convenience.
7. Playground equipment shall be Playworld Systems or approved equal.

SHADE SHELTER SPECIFICATIONS

Americana Illini 10' x 58' DSA Approved Shade Shelter or approved equal

I. Shelter Design

- A. The Structural Design of the Components And Connections Of This Shelter Are Sufficient For Eave Heights Ranging From 7' Up To 12' Tall.
- B. Required Eave Height For Each Site Shall Be Determined By Owner.
- C. This Shelter Has Been Designed As An Open Structure. The Addition Of Any Enclosure Directly Attached To The Shelter, Such As Walls, Insect Mesh, Or Shade Screens, Shall Be Prohibited As Increased Wind Forces May Result.

II. Design and Construction Standards

- A. The Design Of This Structure Is In Conformance With The Following Standards And All Phases Of Construction Shall Be Performed In Accordance with The Following Standards.
 - 1. 2013 California Administrative Code (CAC)(Part 1, Title 24. CCR)
 - 2. 2013 California Building Code (CBC). Volumes 1 And 2 (Part2. Title 24, CCR)(2012 International Building Code With 2013 California Amendments)
 - 3. 2013 California Electrical Code. (Part 3, Title 24. CCR)(2011 National Electrical Code With 2013 California Amendments)
 - 4. 2013 California Mechanical Code (CMC)(Part 4, Title 24, CCR)(2012 Uniform Mechanical Code With 2013 California Amendments)
 - 5. 2013 California Plumbing Code (CPC)(Part 5. Title 24, CCR)(2012 Uniform Plumbing Code With 2013 California Amendments)
 - 6. 2013 California Energy Code (Part 6, Title 24, CCR)
 - 7. 2013 California Fire Code {CFC}(Part 9, Title 24, CCR) (2012 International Fire Code With 2013 California Amendments)
 - 8. 2013 California Green Building Standards Code {Part 11, Title 24, CCR}
 - 9. 2013 California Referenced Standards Code(Part 12, Title 24, CCR)
 - 10. NFPA 13- 2013
 - 11. NFPA 72-2013

III. Construction Changes

- A. Changes To The Approved Plans And Specifications Shall Be Made By Addenda Or Construction Change Document Approved By The Division Of The State Architect As Required by Part 1, Title 24. C.C.R

IV. Foundation

- A. The foundation Shall Rest On Sound Soil That Is Free Of Organic And Deleterious Materials And Capable Of Supporting 1000 PPSF Vertical Bearing Pressure.
- B. For Lateral Loading, The Foundation Has Been Designed To The Minimum Lateral Bearing Value In CBC Table 1806A.2. This is 100 PSF/Ft Lateral Bearing.
- C. Foundation Design Shown Is Based On Soil Conditions Given In Notes A And B, Above. Owner Shall Verify Actual Soil Conditions At Each Job Site and any(Required Adjustments To The Footing Design Shall Be Designed By Others.

V. Concrete

- A. Compression Strength Of All Reinforced Concrete Shall Not Be Less Than 4000 PSI At 28 Days.
- B. Reinforcing Bars Shall Be Deformed Bars Conforming To The Requirements Of Minimum ASTM A615 Grade 40 For #4 And Smaller Bars And Grade 60 For Bars Larger Than #4.
- C. Minimum Concrete Clear Cover For Reinforcing Bars Shall Be 3".
- D. A Concrete Mix Design In Accordance With CBC Section Chapter 19A Shall Be Performed And Stamped By A Civil Engineer licensed In The State Of California. The Concrete Mix Design Shall Be Submitted To The Inspector Of Record Prior To Construction.
- E. The Mix Design shall meet the criteria herein and shall be proper for local conditions including, but Not Limited To, freezing and Thawing Exposure, Chemical And Salt Exposure, and Soil Corrosivity where Such Problems Exist.
- F. Non-Shrink Grout Or Dry Pack Shall Be A premixed, Nonmetallic Formula with A Minimum Compressive Strength Of 7000 PSI At 28 Days And Having The Following characteristics: No Shrinkage After Placement Or Expansion after Set (ASTM C1090), One Day Compressive Strength Of At Least 3000 PSI (ASTM C109) and Initial Set Time Of Not Less Than 45 Minutes (ASTM C191) Provide "Hi-flow Grout" Or "'Dry Pack Grout' By Euclid, Or An Approved Equal.

VI. Structural Steel

- A. Steel Plate Shall Conform To The Requirements Of ASTM A36.
- B. Hollow Structural Sections (HSS) Shall Conform To The Requirements Of ASTM A500, Grade B.
- C. All Structural Steel Shall Be Identified By Mill Certificate.
- D. High Strength Bolts (HSB) Shall Be Galvanized And Shall Conform To The Requirements Of ASTM A325-N. High Strength Bolts Shall Be Tightened To A Snug Tight Condition Plus An Additional Half Turn.

- E. All High Strength Bolts Shall Have Certification.
- F. Welding Shall Conform To The Requirements Of The American Welding Society's Specification For The Material Being Welded. All Welding Shall Be Performed By AWS Certified Welders.
- G. Weld Electrodes Shall Be E70XX And Shall Conform To The Requirements Of AWS D.1 .8-6.3 For Demand Critical Welds.
- H. All Welding Shall Be Approved By An AWS Certified Inspector
- I. Steel Framing Shall Be Coated With Anti-Graffiti Polyester TGIC Powder Coat finish Meeting AAMA 2604-02 Specifications.
- J. Shop Drawings Of All Structural Steel Shall Be Submitted To Hyytinen Engineering For Approval Prior To Fabrication.
- K. All Bolt Hole Diameters Shall Be Equal To The Bolt Diameter Plus 1/16" U.N.O Bolt Holes For Anchor Bolts Shall Be Equal To The Bolt Diameter Plus 1/8".
- L. Anchor Bolts Shall Conform To ASTM F1554, Grade 36 And Shall Be Hot Dip Galvanized.

VII. Aluminum

- A. Interlocking Seam Aluminum Roof Deck Shall Be Roll Formed From Aluminum Alloy 3004-H151 and Shall Conform To The Deck Profile Shown On The Drawings.
- B. Aluminum Roof Deck Shall Be Coated With heat Reflective Basf Ultra Cool Coating Or Approved Equal.
- C. Extruded Aluminum Ridge Cap Shall Be Fabricated From Aluminum Alloy 6105-T5 and Shall Conform To The Requirements Shown On The Drawings.
- D. Extruded Aluminum Fascia Shall Be Fabricated from Aluminum Alloy 6063-T5. Extruded aluminum Gutter Shall Be Fabricated From Aluminum Alloy 6105-T5. Aluminum Components Shall Conform To The Requirements Shown On The Drawings.
- E. Extruded Aluminum Ridge Cap, Gutter, And Fascia Shall Be Coated With An Anti-Graffiti Polyester TGIC Powder Coat Finish Meeting AAMA 2604-02 Specifications

VIII. Screws

- A. Screws Shall Be Hilti Kwik-Pro Self Drilling Screws With Bond Seal Washers Per ICC ESR-2196 Or approved Equal.
- B. Screws Attaching To Steel Shall Be 12-24 Hex Washer Head (HWH)#5 Point Screws. Screws Attaching To Aluminum Shall Be 8-18 Hex Washer Head (HWH) #2 Point Screws.
- C. All Screws Shall Be Stainless Steel Or Coated with Zinc.
- D. The Manufacturer Shall Provide A Screw Certification Letter Stating That Screws Provided Match The Size and Type Specified Herein. The Certification Letter Shall Be Submitted To The Inspector Of Record Prior To Installation.

IX. Shop Fabrication And Field Assembly

- A. All Structural Steel And Aluminum Components Shall Be Shop Fabricated So That Field Assembly Of Connections Can Be Performed Using Only Bolting And Screw Placement.

X. Special Inspection

- A. The Owner Shall Employ A Special Inspector To Perform Inspection Of The Construction Of This Part In Accordance With The Requirements Of Chapter 17A Of The 2013 California Building Code (Part 2, Title 24, C.C.R) and The Division Of The State Architect.

XI. Fire Life Safety

- A. An Automatic Fire Protection System May Be Required For This Building Depending On Site Specific Requirements. Where Required. The Automatic Fire Protection System Shall Be Designed By Others .
- B. The Design Of This Shelter Is Capable Of Supporting The Weight Of A Fire Sprinkler System (1.5 PSF).
- C. The Metal Roofing Complies With fire Classification B. This Shelter Has Not Been Designed For Placement Within Any Fire Hazard Severity Zone.

XII. Warranty

- A. Limited Lifetime warranty on aluminum against material failure and corrosion.
- B. 25 Year Limited Warranty on steel against material failure and defects.
- C. 5 Year Limited Warranty on powder coating finish.

COLTON JOINT UNIFIED SCHOOL DISTRICT
1212 Valencia Drive
Colton, CA 92324

SPECIFIC ITEMS REQUESTED BID #15-04

<u>Item</u>	<u>Quantity</u>	<u>Brand/Model or equal</u>
1.	1 each	Playworld Systems Model #C15004CH
2.	1 each	Playworld Systems Model #C15003SP
3.	1 each	Playworld Systems Model #C15001SP
4.	1 each	Americana Building Products Illini 10' x 58' DSA Approved Shade Shelter

DO NOT INCLUDE SALES TAX OR INSTALLATION ON THE PROPOSAL FORM

COLTON JOINT UNIFIED SCHOOL DISTRICT
1212 Valencia Drive
Colton, CA 92324

PROPOSAL FORM FOR BID #15-04
PRICING INFORMATION

<u>Item</u>	<u>Quantity</u>	<u>Brand/Model Supplied</u>	<u>Unit Cost</u>	<u>Shipping</u>	<u>Total</u>
1.	1 each	Playworld Systems #C15004CH -As Specified	\$47,437.-	\$4,278.-	\$51,715.-
2.	1 each	Playworld Systems #C15003SP -As Specified	\$32,716.-	\$3,323.-	\$36,039.-
3.	1 each	Playworld Systems #C15001SP -As Specified	\$21,949.-	\$2,325.-	\$24,274.-
4.	1 each	Americana Building Products #IL1058-13 C&C, Illin: 10:58' -As Specified DSA PC# 02-113840	\$25,865.-	\$1,724.-	\$27,589.-

TOTAL BASE BID AMOUNT (Items 1-4)

\$139,617.00

DO NOT INCLUDE SALES TAX OR INSTALLATION ON THE PROPOSAL FORM

COLTON JOINT UNIFIED SCHOOL DISTRICT
1212 Valencia Drive
Colton, CA 92324

PROPOSAL FORM FOR BID #15-04
ADDITIONAL PRICING INFORMATION

Optional: Bidders may list percent discounts from their current, general published component pricing catalog for playground equipment, or specified catalogs for their full line of products, if they wish. The District reserves the right to accept or reject any general discount when making any award.

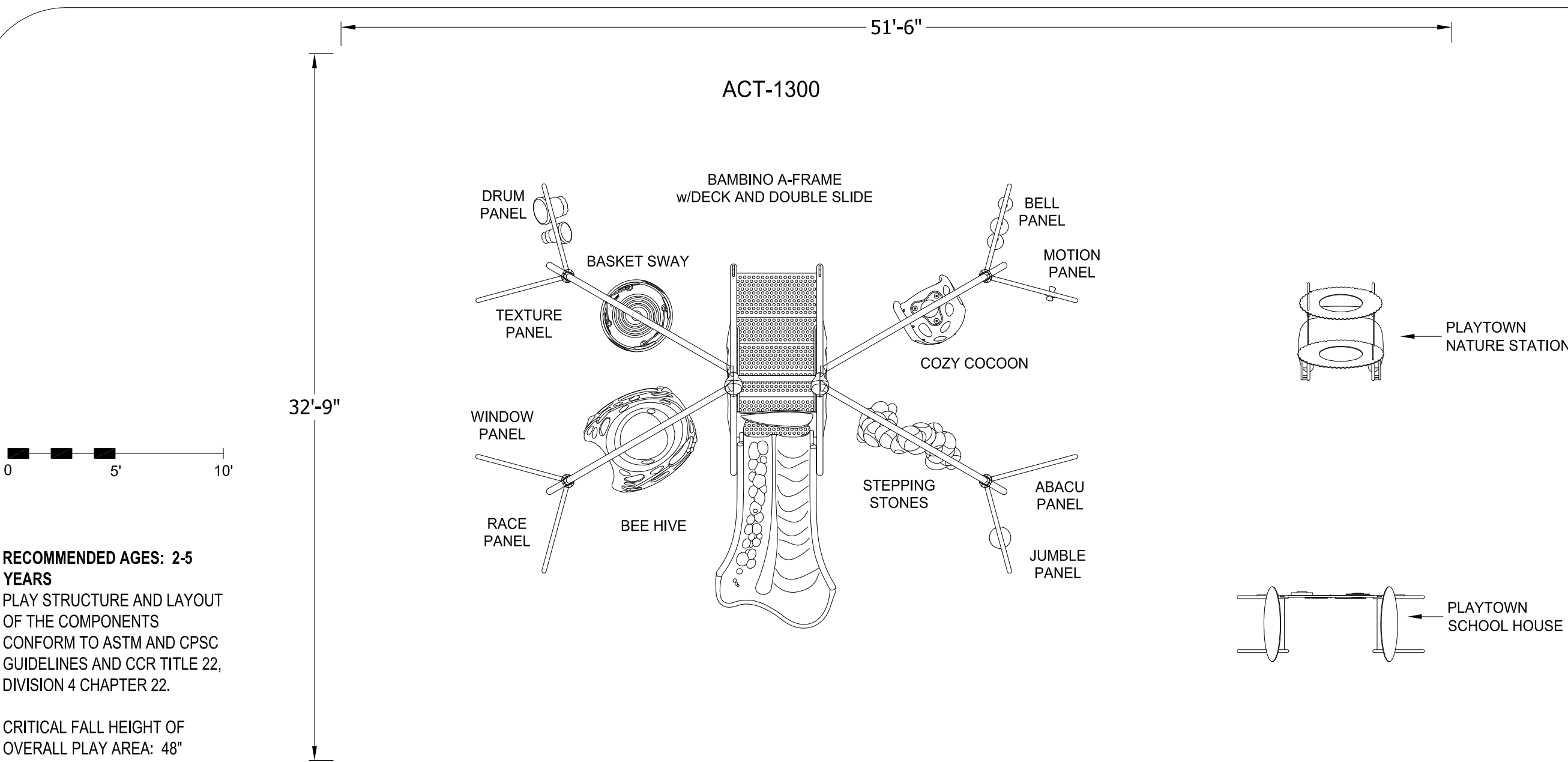
Manufacturer Submitted	% Discount	Shipping	Minimum Freight
		Less than 1K lbs: \$2.05/LB	
Playworld Systems	17.0%	more than 1K lbs: \$1.72/LB	\$1,000.-
		more than 2K lbs: \$1.47/LB	
Playworld Shipping Cont...		more than 5K lbs: \$1.28/LB	
Wabash	15.0%	Less than 1K lbs: \$2.35/LB	\$1,000.-
		more than 1K lbs: \$1.96/LB	
		more than 2K lbs: \$1.68/LB	
Wabash Shipping cont...		more than 5K lbs: \$1.46/LB	
PW Athletic	15.0%	less than 1K lbs: \$1.40/LB	\$1,000.-
		more than 1K lbs: \$1.15/LB	
		more than 2K lbs: \$1.00/LB	
Americana Building Products	5.0%	\$.58/LB	\$ 600.-
Pro-tect Turf	5.0%	Included	N/A
Tot Turf	5.0%	Included	N/A
Robertson Recreational Surfaces	5.0%	\$.65/LB	\$1,000.-
Custom Canopies, Inc.	5.0%	\$.20/LB	\$ 400.-
		less than 1K lbs: \$1.40/LB	
Patterson-Williams	10.0%	more than 1K lbs: \$1.15/LB	\$1,000.-
		more than 2K lbs: \$1.00/LB	
Zeager Brothers	5.0%	\$800 per 100 cubic yards	\$1,000.-
		Less than 1K lbs: \$2.35/LB	
Urbanscape	10.0%	more than 1K lbs: \$1.96/LB	\$1,000.-
		Less than 1K lbs: \$2.05/LB	
Playsimple	5.0%	more than 1K lbs: \$1.72/LB	\$1,000.-
		Less than 1K lbs: \$2.05/LB	
LifeTrail	5.0%	more than 1K lbs: \$1.72/LB	\$1,000.-
		Less than 1K lbs: \$2.05/LB	
Neos	5.0%	more than 1K lbs: \$1.72/LB	\$1,000.-

COLTON JOINT UNIFIED SCHOOL DISTRICT
1212 Valencia Drive
Colton, CA 92324

PROPOSAL FORM FOR BID #15-04
ADDITIONAL PRICING INFORMATION (cont.)

Optional: Bidders may list percent discounts from their current, general published component pricing catalog for playground equipment, or specified catalogs for their full line of products, if they wish. The District reserves the right to accept or reject any general discount when making any award.

<u>Manufacturer Submitted</u>	<u>% Discount</u>	<u>Shipping</u>	<u>Minimum Freight</u>
LA Steelcraft	10.0%	\$.58/LB	\$ 1,000.-
Kay Park	10.0%	\$.58/LB	\$ 600.-
Most Dependable Fountains	5.0%	\$.50/LB	\$ 600.-
HAWS	5.0%	\$.50/LB	\$ 600.-
Jensen Swing Products	5.0%	\$.32/LB	\$ 400.-
Childforms	5.0%	\$.58/LB	\$ 600.-
National Recreation	10.0%	\$.67/LB	\$ 700.-
Playworld Systems, Inc. Family of Products	5.0%	Less than 1K lbs: \$2.05/lb more than 2K lbs: \$1.72/lb	\$ 1,000.-
Sunports	5.0%	\$.63/LB	\$ 600.-
Recycled Wood Products	5.0%	\$ 800 per 100 cubic yards	\$ 1,000.-
Artesia Sandust Products	5.0%	\$ 800 per 100 cubic yards	\$ 1,000.-
Sof"Fall	5.0%	\$ 800 per 100 cubic yards	\$ 1,000.-
Sof' Solutions	5.0%	\$.65/LB	\$ 600.-
Sof' Surfaces	5.0%	\$.65/LB	\$ 600.-
No Fault	5.0%	\$.65/LB	\$ 600.-
Turboscape	5.0%	\$ 25 per cubic yard	\$ 1,000.-



RECOMMENDED AGES: 2-5 YEARS
PLAY STRUCTURE AND LAYOUT OF THE COMPONENTS CONFORM TO ASTM AND CPSC GUIDELINES AND CCR TITLE 22, DIVISION 4 CHAPTER 22.

CRITICAL FALL HEIGHT OF OVERALL PLAY AREA: 48"

TOTAL ELEVATED PLAY COMPONENTS:	1			
TOTAL ELEVATED PLAY COMPONENTS ACCESSIBLE BY RAMP:	0	REQUIRED:		0
TOTAL ELEVATED PLAY COMPONENTS ACCESSIBLE BY TRANSFER:	1	REQUIRED:		0
TOTAL ACCESSIBLE GROUND LEVEL COMPONENTS SHOWN:	12	REQUIRED:		0
TOTAL ACCESSIBLE GROUND LEVEL COMPONENTS OF DIFFERENT TYPES:	12	REQUIRED:		0



© 2007 Playworld Systems, Inc.
Playworld™ is a brand of Playworld Systems®, Inc.

COLTON USD

dave bang associates, inc. Since 1979

P.O. Box 1088, Tustin, CA 92781 P: 1-800-669-2585
License #795052 • www.davebang.com

2015 BAMBINO

SITE PLAN

PROJECT NO:

C15001SP

DATE:

02-JAN-15

SCALE:

3/16" = 1'-0"

DRAWN BY:

Marilyn Allen

COLTON USD

Design Number: C15001SP - Compliance and Technical Data

Reference Document: ASTM F1487

Ref. No.	Part No.	Qty.	Description	Unit ASTM Status	Total Weight (lbs)	Pre- Consumer Recycled Content (lbs)	Post- Consumer Content (lbs)	CO2e Footprint (kgs)	Users	Install Hours	Concrete (Yds3)	Active Play Events
1	ZZAC0035	4	OUTRIGGERS FOR PANELS	Certified	332.16			742	0	5.00	0.24	0
2	ZZAC0036	1	ACTIVO BAMBINO RAINBOW WINDOW PANEL	Certified	28.11			454	2	0.50	0.00	1
3	ZZAC0037	1	ACTIVO BAMBINO BELL PANEL	Certified	35.81			346	2	0.50	0.00	1
4	ZZAC0038	1	ACTIVO BAMBINO DRUM PANEL	Certified	36.35			386	2	0.50	0.00	1
5	ZZAC0039	1	ACTIVO BAMBINO TACTILE PANEL	Certified	26.93			326	2	0.50	0.00	1
6	ZZAC0040	1	ACTIVO BAMBINO CAR RACE PANEL	Certified	28.03			338	2	0.50	0.00	1
7	ZZAC0041	1	ACTIVO BAMBINO COUNTING PANEL	Certified	27.00			439	2	0.50	0.00	1
8	ZZAC0042	1	ACTIVO BAMBINO MOVE-IT PANEL	Certified	37.72			458	2	0.50	0.00	1
9	ZZAC0043	1	ACTIVO BAMBINO JUMBLE PANEL	Certified	41.53			684	2	0.50	0.00	1
10	ZZAC0030	1	ACTIVO BAMBINO A-FRAME	Certified	1,061.23			3,731	6	10.50	0.63	3
11	ZZAC0031	1	ACTIVO BAMBINO ARCH - BEE HIVE	Certified	194.17			1,015	2	3.50	0.25	1
12	ZZAC0032	1	ACTIVO BAMBINO ARCH - STEPPING STONES	Certified	138.67			772	3	3.50	0.25	1
13	ZZAC0033	1	ACTIVO BAMBINO ARCH - COCOON	Certified	217.67			1,309	3	3.00	0.26	1
14	ZZAC0034	1	ACTIVO BAMBINO ARCH - BASKET SWAY	Certified	148.38			878	3	2.00	0.26	1
Totals:					2,353.76	370	584	11,878	33	31.50	1.89	15
					1,059.19 Kg	167 Kg	263 Kg	12 Metric Tons	1.44 m3			



COLTON USD

Design Number: C15001SP - Compliance and Technical Data

Reference Document: ASTM F1487

Ref. No.	Part No.	Qty.	Description	Unit ASTM Status	Total Weight (lbs)	Pre- Consumer Recycled Content (lbs)	Post- Consumer Content (lbs)	CO2e Footprint (kgs)	Users	Install Hours	Concrete (Yds3)	Active Play Events
-------------	----------	------	-------------	------------------------	--------------------------	--	---------------------------------------	----------------------------	-------	------------------	--------------------	--------------------------

ASTM F1487

The lay-out for this custom playscape, design number C15001SP, has been configured to meet the requirements of the ASTM F1487 standard. In addition, each of the above components listed as "Certified" have been tested and are IPEMA certified. Components listed as "Not Applicable" do not fall within the scope of the ASTM F1487 standard and have not been tested. IPEMA certification can be verified on the IPEMA website, www.ipema.org. In the interest of playground safety, IPEMA provides a Third Party Certification Service which validates compliance.

2010 ADA Standards for Accessible Design

The lay-out was also designed to meet the 2010 Standards published 15-Sep-2010, by the Department of Justice when installed over a properly maintained surfacing material that is in compliance with ASTM F1951 "Accessibility of Surface Systems Under and Around Playground Equipment" as well as ASTM F1292, "Impact Attenuation of Surfacing Materials Within the Use Zone of Playground Equipment", appropriate for the fall height of the structure.

Installation Times

Installation times are based on one experienced installer. A crew of three experienced individuals can perform the installation within the given time, each member working 1/3 of the given hours. [Eg. Installation Time = 30 hours. For a crew of three, each member will work 10 hours on the installation for a total of 30 hours on the project.]

Carbon Footprint

The CO2e (carbon footprint given in Kilograms and Metric Tons) listed above is a measure of the environmental impact this play structure represents from harvesting raw materials to the time it leaves our shipping dock. Playworld Systems nurtures a total corporate culture that is focused on eliminating carbon producing processes and products, reducing our use of precious raw materials, reusing materials whenever possible and recycling materials at every opportunity. Playworld Systems elected to adopt the Publicly Available Specification; PAS 2050 as published by the British Standards Institute and sponsored by Defra and the Carbon Trust. The PAS 2050 has gained international acceptance as a specification that measures the greenhouse gas emissions in services and goods throughout their entire life cycle.

Pre-Consumer Recycle Content

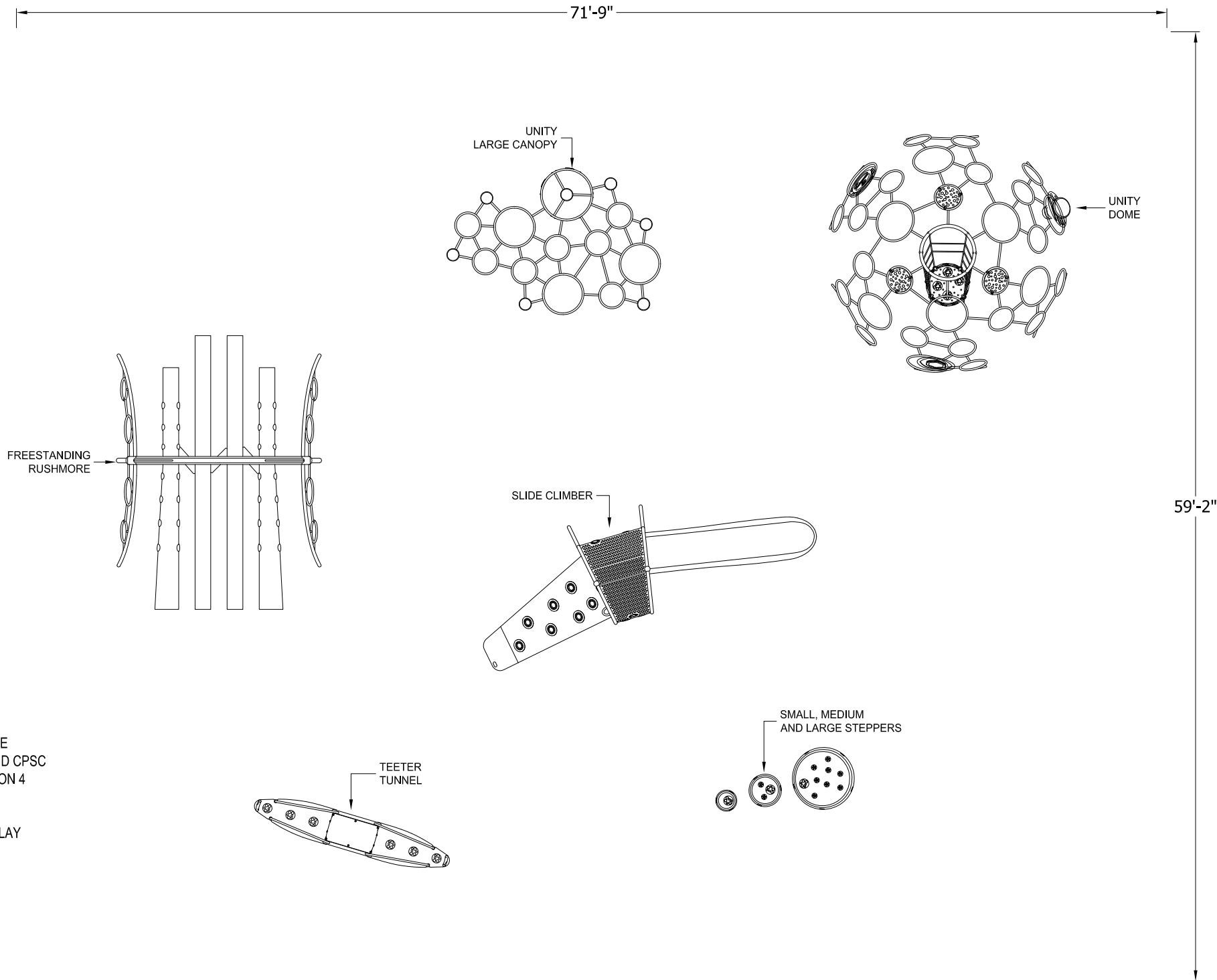
A measurement, in pounds, that qualifies the amount of material that was captured as waste and diverted from landfill during an initial manufacturing process and is being redirected to a separate manufacturing process to become a different product. E.g. 100% of our Aluminum Tubing is made from captured waste material during the manufacturing process of extruded Aluminum products such as rods, flat bars and H-channels.

Post-Consumer Recycle Content

A measurement, in pounds, that qualifies the amount of material that was once another product that has completed its lifecycle and has been diverted from a landfill as a solid waste through recycling and is now being used in a Playworld Systems' product. E.g. **20% to 40% of the steel in our steel tubing and sheet steel have been diverted from landfills. Automobiles are scrapped and recyclable steel is purchased by the steel mill that produces our raw product.

** The amount of Post-Consumer recycled steel fluctuates daily based on the availability of the recycled steel.





RECOMMENDED AGES: 5-12 YEARS
PLAY STRUCTURE AND LAYOUT OF THE
COMPONENTS CONFORM TO ASTM AND CPSC
GUIDELINES AND CCR TITLE 22, DIVISION 4
CHAPTER 22.

CRITICAL FALL HEIGHT OF OVERALL PLAY
AREA: 84"

2015 SITE PLAN

SITE PLAN

PROJECT NO:

C15003SP

DATE:

07-JAN-15

SCALE:

1/8" = 1'-0"

DRAWN BY:

Marilyn Allen

PLAYWORLD™

© 2007 Playworld Systems, Inc.
Playworld™ is a brand of Playworld Systems®, Inc.

COLTON USD

**dave
bang associates, inc.** Since 1979

P.O. Box 1088, Tustin, CA 92781 P: 1-800-669-2585
License #795052 • www.davebang.com

COLTON USD

Design Number: C15003SP - Compliance and Technical Data

Reference Document: ASTM F1487

Ref. No.	Part No.	Qty.	Description	Unit ASTM Status	Total Weight (lbs)	Pre-	Post-	CO2e Footprint (kgs)	Users	Install Hours	Concrete (Yds3)	Active Play Events		
						Consumer Recycled Content (lbs)	Consumer Content (lbs)							
1	ZZXX0182	1	UNITY TEETER TUNNEL W/ LEXAN TOP	N/A	694.53			2,124	7	12.00	0.78	1		
2	ZZXX0183	1	UNITY RUSHMORE	N/A	1,170.18			7,319	18	28.00	1.32	1		
3	ZZXX0187	1	UNITY LARGE OVERHEAD CANOPY	N/A	608.08			1,212	0	9.50	0.84	0		
4	ZZXX0346	1	UNITY SLIDE CLIMBER	Certified	892.51			3,422	10	7.50	0.21	1		
5	ZZXX0366	1	UNITY DOME	Certified	600.10			2,878	17	20.00	1.80	1		
6	ZZXX0367	1	UNITY DOME SENSORY PANELS	Certified	75.21			873	3	1.50	0.00	3		
7	ZZUN7136	1	UNITY STEPPER - SMALL	N/A	29.97			69	1	1.00	0.13	1		
8	ZZUN7137	1	UNITY STEPPER - MEDIUM	N/A	54.71			145	1	1.00	0.13	1		
9	ZZUN7138	1	UNITY STEPPER - LARGE	N/A	128.05			342	4	2.00	0.00	1		
Totals:					4,253.34	688	1,250	18,383	61	82.50	5.21	10		
					1,914.00	Kg	310	Kg	563	Kg	18	Metric Tons	3.96	m3

COLTON USD

Design Number: C15003SP - Compliance and Technical Data

Reference Document: ASTM F1487

Ref. No.	Part No.	Qty.	Description	Unit ASTM Status	Total Weight (lbs)	Pre- Consumer Recycled Content (lbs)	Post- Consumer Content (lbs)	CO2e Footprint (kgs)	Users	Install Hours	Concrete (Yds3)	Active Play Events
-------------	----------	------	-------------	------------------------	--------------------------	--	---------------------------------------	----------------------------	-------	------------------	--------------------	--------------------------

ASTM F1487

The lay-out for this custom playscape, design number C15003SP, has been configured to meet the requirements of the ASTM F1487 standard. In addition, each of the above components listed as "Certified" have been tested and are IPEMA certified. Components listed as "Not Applicable" do not fall within the scope of the ASTM F1487 standard and have not been tested. IPEMA certification can be verified on the IPEMA website, www.ipema.org. In the interest of playground safety, IPEMA provides a Third Party Certification Service which validates compliance.

2010 ADA Standards for Accessible Design

The lay-out was also designed to meet the 2010 Standards published 15-Sep-2010, by the Department of Justice when installed over a properly maintained surfacing material that is in compliance with ASTM F1951 "Accessibility of Surface Systems Under and Around Playground Equipment" as well as ASTM F1292, "Impact Attenuation of Surfacing Materials Within the Use Zone of Playground Equipment", appropriate for the fall height of the structure.

Installation Times

Installation times are based on one experienced installer. A crew of three experienced individuals can perform the installation within the given time, each member working 1/3 of the given hours. [Eg. Installation Time = 30 hours. For a crew of three, each member will work 10 hours on the installation for a total of 30 hours on the project.]

Carbon Footprint

The CO2e (carbon footprint given in Kilograms and Metric Tons) listed above is a measure of the environmental impact this play structure represents from harvesting raw materials to the time it leaves our shipping dock. Playworld Systems nurtures a total corporate culture that is focused on eliminating carbon producing processes and products, reducing our use of precious raw materials, reusing materials whenever possible and recycling materials at every opportunity. Playworld Systems elected to adopt the Publicly Available Specification; PAS 2050 as published by the British Standards Institute and sponsored by Defra and the Carbon Trust. The PAS 2050 has gained international acceptance as a specification that measures the greenhouse gas emissions in services and goods throughout their entire life cycle.

Pre-Consumer Recycle Content

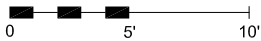
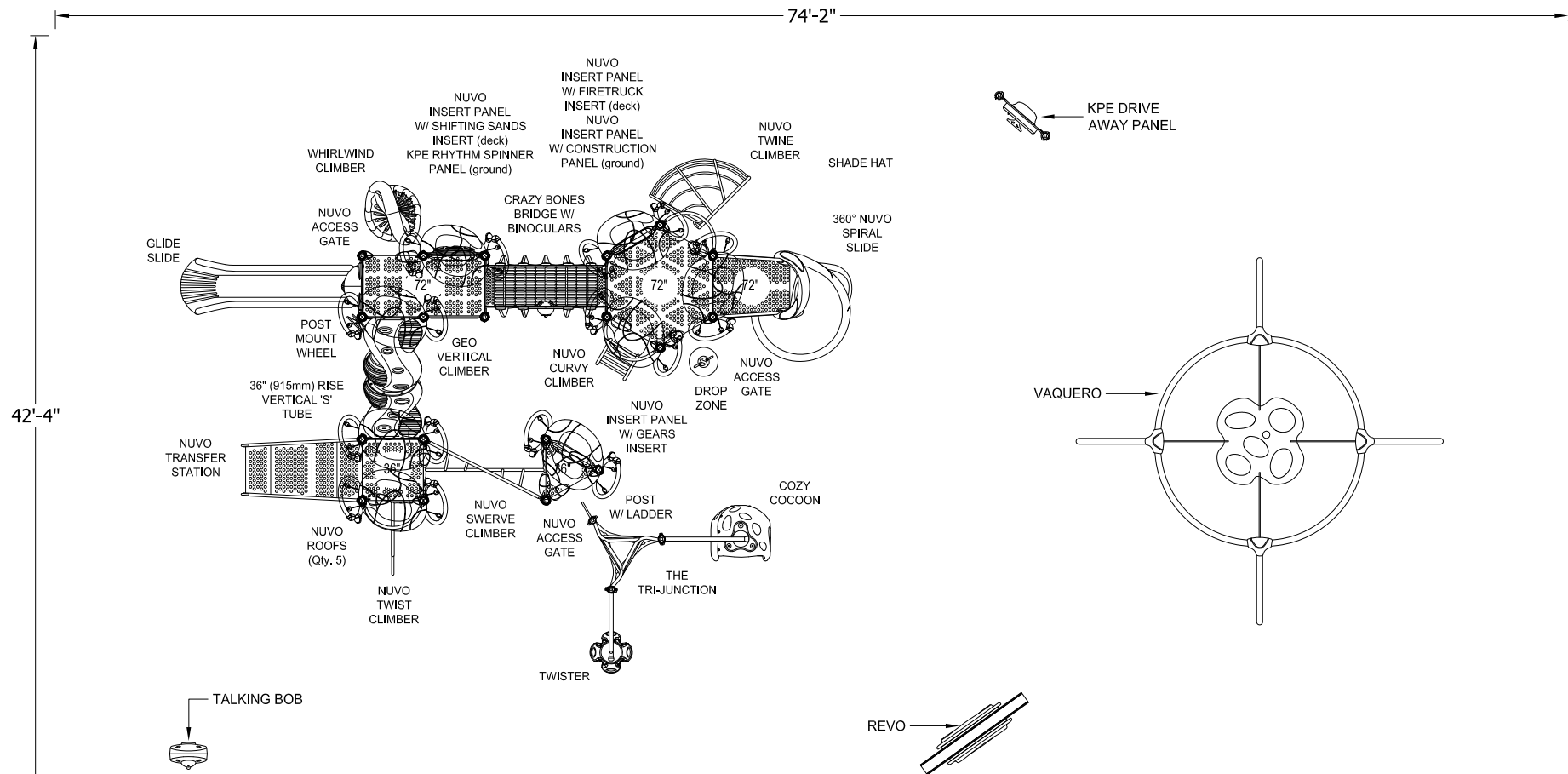
A measurement, in pounds, that qualifies the amount of material that was captured as waste and diverted from landfill during an initial manufacturing process and is being redirected to a separate manufacturing process to become a different product. E.g. 100% of our Aluminum Tubing is made from captured waste material during the manufacturing process of extruded Aluminum products such as rods, flat bars and H-channels.

Post-Consumer Recycle Content

A measurement, in pounds, that qualifies the amount of material that was once another product that has completed its lifecycle and has been diverted from a landfill as a solid waste through recycling and is now being used in a Playworld Systems' product. E.g. **20% to 40% of the steel in our steel tubing and sheet steel have been diverted from landfills. Automobiles are scrapped and recyclable steel is purchased by the steel mill that produces our raw product.

** The amount of Post-Consumer recycled steel fluctuates daily based on the availability of the recycled steel.





RECOMMENDED AGES: 5-12 YEARS
PLAY STRUCTURE AND LAYOUT OF THE
COMPONENTS CONFORM TO ASTM
AND CPSC GUIDELINES AND CCR TITLE
22, DIVISION 4 CHAPTER 22.

CRITICAL FALL HEIGHT OF OVERALL
PLAY AREA: 77"

TOTAL ELEVATED PLAY COMPONENTS:	13		
TOTAL ELEVATED PLAY COMPONENTS ACCESSIBLE BY RAMP:	0	REQUIRED:	0
TOTAL ELEVATED PLAY COMPONENTS ACCESSIBLE BY TRANSFER:	11	REQUIRED:	7
TOTAL ACCESSIBLE GROUND LEVEL COMPONENTS SHOWN:	5	REQUIRED:	5
TOTAL ACCESSIBLE GROUND LEVEL COMPONENTS OF DIFFERENT TYPES:	5	REQUIRED:	3

2015
CHALLENGERS

SITE PLAN

PROJECT NO:
C15004CH

DATE:
02-JAN-15

SCALE:
1/8" = 1'-0"

DRAWN BY:
Marilyn Allen



© 2007 Playworld Systems, Inc.
Playworld™ is a brand of Playworld Systems®, Inc.

COLTON USD

dave
bang associates, inc.

Since 1979

P.O. Box 1088, Tustin, CA 92781 P: 1-800-669-2585
License #795052 • www.davebang.com

COLTON USD

Design Number: C15004CH - Compliance and Technical Data

Reference Document: ASTM F1487

Ref. No.	Part No.	Qty.	Description	Unit ASTM Status	Total Weight (lbs)	Pre- Consumer Recycled Content (lbs)	Post- Consumer Content (lbs)	CO2e Footprint (kgs)	Users	Install Hours	Concrete (Yds3)	Active Play Events
1	ZZXX0149	1	VAQUERO	Certified	533.00			1,809	6	8.00	0.65	1
2	ZZXX4200S	1	TALKING BOB	Certified	75.30			1,089	1	2.00	0.00	1
3	ZZCH0018	1	3.5in OD x 124in STEEL POST W/RIVETED CAP	Certified	38.91			54	0	1.00	0.13	0
4	ZZCH0038GZ	2	3.5in OD x 148in GROUND ZERO POST	Certified	94.02			127	0	2.00	0.36	0
5	ZZCH0048	2	3.5in OD x 160in STEEL POST W/ RIVETED CAP	Certified	100.42			136	0	2.00	0.25	0
6	ZZCH0237	6	3.5in OD x 168in SWAGED STEEL POST	Certified	309.66			409	0	3.00	0.75	0
7	ZZCH0246	10	3.5in OD x 196in SWAGED STEEL POST	Certified	647.10			793	0	5.00	1.25	0
8	ZZCH0297	1	POST W/ LADDER CLIMBER (36in OR 48in DECK)	Certified	52.81			74	1	0.50	0.18	1
9	ZZCH0356	2	3.5in x 88in STEEL POST w/CAP	Certified	59.42			79	0	2.00	0.26	0
10	ZZCH0616	1	SQUARE COATED DECK ASSEMBLY	Certified	54.86			174	3	1.00	0.00	0
11	ZZCH0617	1	TRIANGULAR COATED DECK ASSEMBLY	Certified	29.90			120	2	1.00	0.00	0
12	zzCH0619	1	FULL HEX COATED DECK ASSEMBLY	Certified	151.26			444	6	1.50	0.00	0
13	ZZCH0629	1	LONG COATED DECK ASSEMBLY	Certified	107.02			318	6	1.00	0.00	0
14	ZZCH0679	1	NUVO- 36in TRANSFER STATION	Certified	239.49			418	2	3.50	0.12	0
15	ZZCH8599	1	COZY COCOON	Certified	183.06			1,345	1	2.00	0.13	1
16	ZZCH2696	1	GLIDE SLIDE (72in DECK)	Certified	151.63			653	2	2.00	0.03	1
17	ZZCH3537	1	SLIDE- NUVO 360 SPIRAL SLIDE	Certified	650.00			1,417	2	6.00	0.15	1
18	ZZCH4290	1	POST MOUNTED STEERING WHEEL	Certified	7.83			44	1	0.25	0.00	1
19	ZZCH4488	1	DRIVE AWAY PANEL (DECK MOUNT)	Certified	60.50			1,415	2	1.50	0.00	1
20	ZZCH4836	4	NUVO ACTIVITY PANEL	Certified	78.32			930	0	2.00	0.00	0
21	ZZCH6770	1	RHYTHM SPINNER HALF PANEL	Certified	37.90			1,386	2	1.50	0.00	1
22	ZZUN4857	1	NUVO - CONSTRUCTION PANEL INSERT	Certified	30.80			401	1	0.50	0.00	1
23	ZZUN4868	1	NUVO - GEAR PANEL INSERT	Certified	24.14			375	1	0.50	0.00	1
24	ZZUN4877	1	NUVO - SHIFTING SANDS PANEL INSERT	Certified	24.18			280	1	0.50	0.00	1
25	ZZUN4878	1	NUVO - FIRETRUCK PANEL INSERT	Certified	26.36			282	1	0.50	0.00	1
26	ZZCH5636	1	VERTICAL S ADVENTURE TUBE	Certified	132.02			1,056	3	3.00	0.00	1



COLTON USD

Design Number: C15004CH - Compliance and Technical Data

Reference Document: ASTM F1487

Ref. No.	Part No.	Qty.	Description	Unit ASTM Status	Total Weight (lbs)	Pre- Consumer Recycled Content (lbs)	Post- Consumer Content (lbs)	CO2e Footprint (kgs)	Users	Install Hours	Concrete (Yds3)	Active Play Events
27	ZZCH4837	3	NUVO- ACCESS GATE W/ HANDLE	Certified	52.29			497	0	1.50	0.00	0
28	ZZCH6956	1	NUVO SWERVE CLIMBER	N/A	93.54			539	2	2.00	0.00	1
29	ZZCH6998	1	GEO VERTICAL CLIMBER (72in DK)	Certified	75.05			267	2	1.00	0.00	1
30	ZZCH7039	1	72in TWINE CLIMBER	Certified	100.51			410	1	4.00	0.12	1
31	ZZCH7046	1	36in TWIST CLIMBER	Certified	82.51			540	1	1.50	0.03	1
32	ZZCH7059	1	72in CURVY CLIMBER	Certified	85.42			474	1	2.00	0.06	1
33	ZZCH9079	1	TRI JUNCTION	Certified	89.44			250	3	0.50	0.00	1
34	ZZUN6740	1	WHIRLWIND CLIMBER 72in	Certified	189.86			858	2	2.50	0.23	1
35	ZZUN7027	1	DROP ZONE (72in DECK)	Certified	216.32			2,299	2	2.00	0.21	1
36	ZZXX0081	1	REVO	Certified	294.68			2,444	2	2.00	0.26	1
37	ZZCH6809	1	TWISTER	Certified	104.80			681	1	2.00	0.05	1
38	ZZCH6427	1	CRAZY BONES 6ft ARCH BRIDGE w/BINOCULARS	Certified	308.76			2,016	2	4.00	0.00	1
39	ZZCH9867	8	NUVO ROOF	Certified	678.00			4,750	0	16.00	0.00	0
Totals:					6,271.09	898	1,592	31,651	63	94.75	5.21	25
					2,821.99 Kg	404 Kg	716 Kg	32 Metric Tons	3.96 m3			



COLTON USD

Design Number: C15004CH - Compliance and Technical Data

Reference Document: ASTM F1487

Ref. No.	Part No.	Qty.	Description	Unit ASTM Status	Total Weight (lbs)	Pre- Consumer Recycled Content (lbs)	Post- Consumer Content (lbs)	CO2e Footprint (kgs)	Users	Install Hours	Concrete (Yds3)	Active Play Events
-------------	----------	------	-------------	------------------------	--------------------------	--	---------------------------------------	----------------------------	-------	------------------	--------------------	--------------------------

ASTM F1487

The lay-out for this custom playscape, design number C15004CH, has been configured to meet the requirements of the ASTM F1487 standard. In addition, each of the above components listed as "Certified" have been tested and are IPEMA certified. Components listed as "Not Applicable" do not fall within the scope of the ASTM F1487 standard and have not been tested. IPEMA certification can be verified on the IPEMA website, www.ipema.org. In the interest of playground safety, IPEMA provides a Third Party Certification Service which validates compliance.

2010 ADA Standards for Accessible Design

The lay-out was also designed to meet the 2010 Standards published 15-Sep-2010, by the Department of Justice when installed over a properly maintained surfacing material that is in compliance with ASTM F1951 "Accessibility of Surface Systems Under and Around Playground Equipment" as well as ASTM F1292, "Impact Attenuation of Surfacing Materials Within the Use Zone of Playground Equipment", appropriate for the fall height of the structure.

Installation Times

Installation times are based on one experienced installer. A crew of three experienced individuals can perform the installation within the given time, each member working 1/3 of the given hours. [Eg. Installation Time = 30 hours. For a crew of three, each member will work 10 hours on the installation for a total of 30 hours on the project.]

Carbon Footprint

The CO2e (carbon footprint given in Kilograms and Metric Tons) listed above is a measure of the environmental impact this play structure represents from harvesting raw materials to the time it leaves our shipping dock. Playworld Systems nurtures a total corporate culture that is focused on eliminating carbon producing processes and products, reducing our use of precious raw materials, reusing materials whenever possible and recycling materials at every opportunity. Playworld Systems elected to adopt the Publicly Available Specification; PAS 2050 as published by the British Standards Institute and sponsored by Defra and the Carbon Trust. The PAS 2050 has gained international acceptance as a specification that measures the greenhouse gas emissions in services and goods throughout their entire life cycle.

Pre-Consumer Recycle Content

A measurement, in pounds, that qualifies the amount of material that was captured as waste and diverted from landfill during an initial manufacturing process and is being redirected to a separate manufacturing process to become a different product. E.g. 100% of our Aluminum Tubing is made from captured waste material during the manufacturing process of extruded Aluminum products such as rods, flat bars and H-channels.

Post-Consumer Recycle Content

A measurement, in pounds, that qualifies the amount of material that was once another product that has completed its lifecycle and has been diverted from a landfill as a solid waste through recycling and is now being used in a Playworld Systems' product. E.g. **20% to 40% of the steel in our steel tubing and sheet steel have been diverted from landfills. Automobiles are scrapped and recyclable steel is purchased by the steel mill that produces our raw product.

** The amount of Post-Consumer recycled steel fluctuates daily based on the availability of the recycled steel.



EXAMPLE FORM DSA 103

NOTE: THE EXAMPLE FORM DSA-103 SHOWN ON THIS SHEET IS FOR ILLUSTRATION PURPOSES ONLY TO ASSIST IN THE COMPLETION OF FUTURE PROJECT SPECIFIC FORM DSA-103'S. A FORM DSA-103 IS TO BE COMPLETED FOR EACH APPLICATION THAT THIS PC IS BEING INCORPORATED INTO AND THE EXAMPLE FORM DSA-103 IS TO BE CROSSED OUT ON THIS DRAWING.

Notes: References are to the 2013 edition of the California Building Code (CBC) unless otherwise noted.

REQUIRED

TEST OR SPECIAL INSPECTION

TYPE

PERFORMED BY

-

SOILS

1. GENERAL:

Table 1705A.6

X

a. Verify that:

- site has been prepared properly prior to placement of controlled fill and/or excavations for foundations,
- foundation excavations are extended to proper depth and have reached proper material, and
- materials below footings are adequate to achieve the design bearing capacity.

Periodic

GE*

* By geotechnical engineer or his or her qualified representative. Use PI in lieu of GE if there is no GE for the site specific project.

-

2. COMPACTED FILLS:

Table 1705A.6

X

a. Perform qualification testing of fill materials.

Test

Lab*

* Under the supervision of the geotechnical engineer.

X

b. Verify use of proper materials and inspect lift thicknesses, placement, and compaction during placement of fill.

Continuous

GE*

* By geotechnical engineer or his or her qualified representative. Use PI in lieu of GE if there is no GE for the site specific project.

X

c. Test compaction of fill.

Test

Lab*

* Under the supervision of the geotechnical engineer.

-

4. CAST-IN-PLACE DEEP FOUNDATIONS (PIERS):

Table 1705A.7

X

a. Inspect drilling operations and maintain complete and accurate records for each pier.

Continuous

GE*

* By geotechnical engineer or his or her qualified representative. Use PI in lieu of GE if there is no GE for the site specific project.

X

b. Verify locations of piers.

Continuous

PI

X

c. Confirm pier diameters, plumbness, bell diameters (if applicable), lengths, and embedment into bedrock (if applicable). Record concrete or grout volumes.

Continuous

GE*

* By geotechnical engineer or his or her qualified representative. Use PI in lieu of GE if there is no GE for the site specific project.

X

d. Confirm adequate end strata bearing capacity.

Test

Lab*

* Under the supervision of the geotechnical engineer.

X

e. Concrete piers.

Provide tests and inspections per CONCRETE section below.

-

CONCRETE

Table 1705A.3

-

7. CAST IN PLACE CONCRETE

Material Verification and Testing:

X

a. Verify use of required design mix.

Periodic

SI & PI*

* To be performed by batch-plant special inspector and project inspector.

X

c. Perform slump, temperature, and (where required) air content tests.

Test

Lab

ASTM C172, ASTM C31.

X

d. Test concrete (compression).

Test

Lab

ACI 318 Section 5.6 and 1905A.1.2 (1913.3.1*). ASTM C39.

Inspection:

X

e. Batch plant inspection

Continuous

SI

1705A.3.2. If approved by DSA, batch plant inspection may be reduced to periodic if plant complies with 1705A.3.3, Item 1, and requires first batch inspection, weighmaster, and batch tickets.

X

g. Inspect placement of formwork, reinforcing steel, embedded items and concrete. Inspect curing and form removal.

Continuous

PI*

* May be performed by a special inspector when specifically approved by DSA.

+ MASONRY

TMS 402-11/ACI 530-11/ASCE 5-11 Table 1.9.3

- STEEL

Table 1705A.2.1

-

17. STRUCTURAL STEEL AND COLD-FORMED STEEL USED FOR STRUCTURAL PURPOSES

Material Verification:

X

a. Verify that all materials are appropriately marked and that:

- Mill certificates indicate material properties that comply with requirements,
- Material sizes, types and grades comply with requirements.

Periodic

*

* By special inspector when performed off-site; by project inspector for steel shipped directly to project site without welding or fabrication.

X

b. Test unidentified materials

Test

Lab

2203A.1 (2203.1*). ASTM A370.

X

c. Examine seam welds of structural tubes and pipes

Periodic

SI*

* DSA IR 17-3.

Inspection:

X

d. Verify member locations, bracing and all details constructed in the field.

Continuous

PI

X

e. Verify stiffener locations, connection tab locations and all construction details fabricated in the shop.

Periodic

SI

-

18. HIGH STRENGTH BOLTS:

Material Verification of High-Strength Bolts, Nuts, and Washers:

X

a. Verify identification markings and manufacturer's certificates of compliance conform to ASTM standards specified in the DSA approved documents.

Periodic

SI

DSA IR 17-9

X

b. Test high-strength bolts, nuts and washers.

Test

Lab

2213A.1 (2212.6.1*). ASTM F606, A370. DSA IR 17-8

Inspection of High-Strength Bolt Installation:

X

c. Bearing-type ("snug tight") connections.

Periodic

SI*

DSA IR 17-9

19. WELDING:

DSA IR 17-3, AWS D1.1 and AWS D1.8 (AWS D1.3 for cold formed steel).

Verification of Materials, Equipment, Welders, etc:

X

a. Verify weld filler material identification markings per AWS designation listed on the DSA approved documents and the WPS.

Periodic

SI

X

b. Verify weld filler material manufacturer's certificate of compliance.

Periodic

SI

X

c. Verify WPS, welder qualifications and equipment.

Periodic

SI

DSA IR 17-3.

-

19.1 SHOP WELDING:

X

a. Inspect groove, multi-pass, and fillet welds > 5/16"

Continuous

SI

Per AISC 360 (and AISC 341 as applicable). DSA IR 17-3.

X

b. Inspect single-pass fillet welds ≤ 5/16"

Periodic

SI

Per AISC 360 (and AISC 341 as applicable). DSA IR 17-3.

+ WOOD

+ OTHER

1 Soils testing and inspection: Geotechnical Verified Report - Form DSA-293

2 All Structural Testing: Laboratory Verified Report - Form DSA-291

3 Concrete Batch Plant Inspection: Special Inspection Verified Report - Form DSA-292

4 HS Bolt Installation Inspection: Special Inspection Verified Report - Form DSA-292

KEY to Columns

1 Type -

2 Performed By -

Continuous - Indicates that a continuous special inspection is required

Periodic - Indicates that a periodic special inspection is required

Test - Indicates that a test is required

GE - Indicates that the special inspection is to be performed by a registered geotechnical engineer or his or her authorized representative

Lab - Indicates that the test or inspection is to be performed by a testing laboratory accepted in the DSA laboratory Evaluation and Acceptance (LEA) Program. See section 4-335, 2013 CBC Title 24, Part 1.

PI - Indicates that the special inspection is to be performed by the project inspector

SI - Indicates that the special inspection is to be performed by a special inspector

2013 CBC PC STRUCTURAL DESIGN NOTES

DESCRIPTION

DESIGN VALUES

DEAD AND LIVE LOADS

ROOF LIVE LOAD (Lr)

20 PSF

ROOF DEAD LOAD (D)

5 PSF

ALLOWABLE SOIL PRESSURE

DL

1000 PSF

DL+Lr

1000 PSF

DL+SNOW

1000 PSF

DL+SEISMIC

1333 PSF

DL+WIND

1333 PSF

ROOF SNOW LOAD

GROUND SNOW LOAD (Pg)

22 PSF

SLOPED ROOF SNOW LOAD (Ps)

20 PSF

SNOW EXPOSURE FACTOR (Ce)

1.1

SNOW IMPORTANCE FACTOR (I)

1.0

THERMAL FACTOR (Ct)

1.2

FLOOD DESIGN

FLOOD HAZARD AREA

NO

WIND DESIGN

ULTIMATE DESIGN WIND SPEED (Vult)

130 MPH

WIND EXPOSURE FACTOR

C

TOPOGRAPHIC FACTOR (Kzt)

1.0

ASCE 7-10 WIND ANALYSIS METHOD

CHAPTER 27 DIRECTIONAL PROCEDURE

VELOCITY PRESSURE EXPOSURE COEFFICIENT (Kq)

0.85

NET PRESSURE COEFFICIENT

VARIES, SEE CALCULATIONS

WIND DIRECTIONALITY FACTOR (Kd)

0.85

WIND VELOCITY PRESSURE (qh)

31.3 PSF

SEISMIC DESIGN

TRANSVERSE LATERAL FORCE RESISTING SYSTEM

STEEL ORDINARY MOMENT RESISTING FRAMES

LONGITUDINAL LATERAL FORCE RESISTING SYSTEM

STEEL CANTILEVER COLUMNS

ASCE 7-10 ANALYSIS PROCEDURE

SECTION 12.8 EQUIVALENT LATERAL FORCE PROCEDURE

SEISMIC DESIGN CATEGORY

E

SEISMIC IMPORTANCE FACTOR

1.0

TRANSVERSE DESIGN BASE SHEAR (V)

104 # PER COLUMN

LONGITUDINAL DESIGN BASE SHEAR (V)

288 # PER COLUMN

TRANSVERSE SEISMIC RESPONSE COEFFICIENT (Cs)

0.29

LONGITUDINAL SEISMIC RESPONSE COEFFICIENT (Cti)

0.8

TRANSVERSE RESPONSE MODIFICATION FACTOR (R)

3.5

LONGITUDINAL RESPONSE MODIFICATION FACTOR (R)

1.25

SITE CLASS

D

MAPPED MCE, 5% DAMPED, SPECTRAL RESPONSE ACCELERATION AT SHORT PERIOD (Ss)

1.875

SHORT PERIOD SITE COEFFICIENT (Fp)

1.0

DESIGN MCE, 5% DAMPED, SPECTRAL RESPONSE ACCELERATION AT SHORT PERIOD (Ss)

1.0

MAPPED MCE, 5% DAMPED, SPECTRAL RESPONSE ACCELERATION AT 1 SECOND PERIOD (S1)

1.3

LONG PERIOD SITE COEFFICIENT (Fv)

1.5

DESIGN, 5% DAMPED, SPECTRAL RESPONSE ACCELERATION AT 1 SECOND PERIOD (S1)

1.3

HORIZONTAL OR VERTICAL IRREGULARITY TYPES

NONE

BUILDING DATA

CONSTRUCTION CLASSIFICATION

TYPE II-B

OCCUPANCY CLASSIFICATION

A-2

RISK CATEGORY

II

NUMBER OF STORIES

1

MINIMUM SEISMIC SEPARATION

3"

MAXIMUM AREA

928 SF

NOTICE OF DISCLAIMER FOR STRUCTURAL ENGINEERING RESPONSIBILITY

1. PER TITLE 24, PART 1, SECTION 4-316(a) OF THE CALIFORNIA CODE OF REGULATIONS, THIS NOTICE SHALL BE GIVEN TO DSA PRIOR TO THE APPROVAL OF PLANS AND SPECIFICATIONS.

2. FOR THE SITE SPECIFIC PROJECT, ROGER HYYTINEN IS NOT THE DESIGN PROFESSIONAL IN GENERAL RESPONSIBLE CHARGE, UNLESS NOTED OTHERWISE.

3. FOR THE SITE SPECIFIC PROJECT, ROGER HYYTINEN'S RESPONSIBILITY IS LIMITED TO THE PREPARATION OF PLANS AND SPECIFICATIONS FOR THE SHELTER(S) OF THIS PC ONLY.

4. STRUCTURAL OBSERVATION OF CONSTRUCTION IS SPECIFICALLY EXCLUDED FROM ROGER HYYTINEN'S RESPONSIBILITY FOR THE SITE SPECIFIC PROJECT.

5. ALL CONSTRUCTION ACTIVITIES RELATED TO STRUCTURAL ENGINEERING SHALL BE DELEGATED TO A QUALIFIED ENGINEER BY THE DESIGN PROFESSIONAL IN GENERAL RESPONSIBLE CHARGE. THESE ACTIVITIES INCLUDE, BUT ARE NOT LIMITED TO, APPROVAL OF INSPECTOR QUALIFICATIONS, STRUCTURAL OBSERVATION OF CONSTRUCTION, REVIEW OF INSPECTION REPORTS, AND SIGNING OFF THE VERIFIED REPORT FOR COMPLETED WORK.

6. ROGER HYYTINEN WILL BE RESPONSIBLE FOR RESPONDING TO QUESTIONS PERTAINING TO THE SITE SPECIFIC PLANS AND SPECIFICATIONS FOR THE SHELTER(S) WHICH ARISE DURING PLAN CHECK AND CONSTRUCTION.

7. IN THE EVENT THAT ROGER HYYTINEN IS REQUIRED TO PROVIDE STRUCTURAL OBSERVATION OF CONSTRUCTION, HE SHALL BE NOTIFIED IN WRITING PRIOR TO THIS REQUIREMENT BEING MADE. ALSO, HIS ANTICIPATED ADDITIONAL FEES FOR THIS ADDITIONAL WORK SHALL BE PAID IN ADVANCE, PRIOR TO ANY STRUCTURAL OBSERVATION OR CONSTRUCTION SERVICES BEING PERFORMED.

GENERAL NOTES

I. SHELTER DESIGN

A. THE STRUCTURAL DESIGN OF THE COMPONENTS AND CONNECTIONS OF THIS SHELTER ARE SUFFICIENT FOR EAVE HEIGHTS RANGING FROM 7' UP TO 12' TALL.

B. REQUIRED EAVE HEIGHT FOR EACH SITE SHALL BE DETERMINED BY OWNER.

C. THIS SHELTER HAS BEEN DESIGNED AS AN OPEN STRUCTURE. THE ADDITION OF ANY ENCLOSURE DIRECTLY ATTACHED TO THE SHELTER, SUCH AS WALLS, INSECT MESH, OR SHADE SCREENS, SHALL BE PROHIBITED AS INCREASED WIND FORCES MAY RESULT.

II. DESIGN AND CONSTRUCTION STANDARDS

A. THE DESIGN OF THIS STRUCTURE IS IN CONFORMANCE WITH THE FOLLOWING STANDARDS AND ALL PHASES OF CONSTRUCTION SHALL BE PERFORMED IN ACCORDANCE WITH THE FOLLOWING STANDARDS.

1. 2013 CALIFORNIA ADMINISTRATIVE CODE (CAC) (PART 1, TITLE 24, CCR)

2. 2013 CALIFORNIA BUILDING CODE (CBC), VOLUMES 1 AND 2 (PART 2, TITLE 24, CCR) (2012 INTERNATIONAL BUILDING CODE WITH 2013 CALIFORNIA AMENDMENTS)

3. 2013 CALIFORNIA ELECTRICAL CODE (PART 3, TITLE 24, CCR)

4. 2013 CALIFORNIA MECHANICAL CODE (CMC) (PART 4, TITLE 24, CCR)

5. 2013 CALIFORNIA PLUMBING CODE (CPC) (PART 5, TITLE 24, CCR)

6. 2013 CALIFORNIA ENERGY CODE (PART 6, TITLE 24, CCR)

7. 2013 CALIFORNIA FIRE CODE (CFC) (PART 8, TITLE 24, CCR)

8. 2013 CALIFORNIA GREEN BUILDING STANDARDS CODE (PART 11, TITLE 24, CCR)

9. 2013 CALIFORNIA REFERENCED STANDARDS CODE (PART 12, TITLE 24, CCR)

10. NFPA 13 - 2013

11. NFPA 72 - 2013

III. CONSTRUCTION CHANGES

A. CHANGES TO THE APPROVED PLANS AND SPECIFICATIONS SHALL BE MADE BY AN ADDENDA OR CONSTRUCTION CHANGE DOCUMENT APPROVED BY THE DIVISION OF THE STATE ARCHITECT AS REQUIRED BY PART 1, TITLE 24, C.C.R.

IV. FOUNDATION

A. THE FOUNDATION SHALL REST ON SOUND SOIL THAT IS FREE OF ORGANIC AND DELETERIOUS MATERIALS AND CAPABLE OF SUPPORTING 1000 PSF VERTICAL BEARING PRESSURE.

B. FOR LATERAL LOADING, THE FOUNDATION HAS BEEN DESIGNED TO THE MINIMUM LATERAL BEARING VALUE IN CBC TABLE 1806A.2. THIS IS 100 PSF/FT LATERAL BEARING.

C. FOUNDATION DESIGN SHOWN IS BASED ON SOIL CONDITIONS GIVEN IN NOTES A AND B, ABOVE. OWNER SHALL VERIFY ACTUAL SOIL CONDITIONS AT EACH JOB SITE AND ANY REQUIRED ADJUSTMENTS TO THE FOOTING DESIGN SHALL BE DESIGNED BY OTHERS.

V. CONCRETE

A. COMPRESSION STRENGTH OF ALL REINFORCED CONCRETE SHALL NOT BE LESS THAN 4000 PSI AT 28 DAYS.

B. REINFORCING BARS SHALL BE DEFORMED BARS CONFORMING TO THE REQUIREMENTS OF MINIMUM ASTM A615 GRADE 40 FOR #4 AND SMALLER BARS AND GRADE 60 FOR BARS LARGER THAN #4.

C. MINIMUM CONCRETE CLEAR COVER FOR REINFORCING BARS SHALL BE 3".

D. A CONCRETE MIX DESIGN IN ACCORDANCE WITH CBC SECTION CHAPTER 18A SHALL BE PERFORMED AND STAMPED BY A CIVIL ENGINEER LICENSED IN THE STATE OF CALIFORNIA. THE CONCRETE MIX DESIGN SHALL BE SUBMITTED TO THE INSPECTOR OF RECORD PRIOR TO CONSTRUCTION.

E. THE MIX DESIGN SHALL MEET THE CRITERIA HEREIN AND SHALL BE PROPER FOR LOCAL CONDITIONS INCLUDING, BUT NOT LIMITED TO, FREEZING AND THAWING EXPOSURE, CHEMICAL AND SALT EXPOSURE, AND SOIL CORROSIVITY WHERE SUCH PROBLEMS EXIST.

F. NON-SHRINK GROUT OR DRY PACK SHALL BE A PREMIXED, NONMETALLIC FORMULA WITH A MINIMUM COMPRESSIVE STRENGTH OF 7000 PSI AT 28 DAYS AND HAVING THE FOLLOWING CHARACTERISTICS: NO SHRINKAGE AFTER PLACEMENT OR EXPANSION AFTER SET (ASTM C1090), ONE DAY COMPRESSIVE STRENGTH OF AT LEAST 3000 PSI (ASTM C109) AND INITIAL SET TIME OF NOT LESS THAN 45 MINUTES (ASTM C191). PROVIDE "HI-FLOW GROUT" OR "DRY PACK GROUT" BY EUCLID, OR AN APPROVED EQUAL.

VI. STRUCTURAL STEEL

A. STEEL PLATE SHALL CONFORM TO THE REQUIREMENTS OF ASTM A36.

B. HOLLOW STRUCTURAL SECTIONS (HSS) SHALL CONFORM TO THE REQUIREMENTS OF ASTM A500, GRADE B.

C. ALL STRUCTURAL STEEL SHALL BE IDENTIFIED BY MILL CERTIFICATE.

D. HIGH STRENGTH BOLTS (HSSB) SHALL BE GALVANIZED AND SHALL CONFORM TO THE REQUIREMENTS OF ASTM A325-N. HIGH STRENGTH BOLTS SHALL BE TIGHTENED TO A SNUG TIGHT CONDITION PLUS AN ADDITIONAL HALF TURN.

E. ALL HIGH STRENGTH BOLTS SHALL HAVE CERTIFICATION.

F. WELDING SHALL CONFORM TO THE REQUIREMENTS OF THE AMERICAN WELDING SOCIETY'S SPECIFICATION FOR THE MATERIAL BEING WELDED. ALL WELDING SHALL BE PERFORMED BY AWS CERTIFIED WELDERS.

G. WELD ELECTRODES SHALL BE E70XX AND SHALL CONFORM TO THE REQUIREMENTS OF AWS D1.8-6.3 FOR DEMAND CRITICAL WELDS.

H. ALL WELDING SHALL BE APPROVED BY AN AWS CERTIFIED INSPECTOR.

I. STEEL FRAMING SHALL BE COATED WITH ANTI-GRAFFITI POLYESTER TGIC POWDER COAT FINISH MEETING AAMA 2604-02 SPECIFICATIONS.

J. SHOP DRAWINGS OF ALL STRUCTURAL STEEL SHALL BE SUBMITTED TO HYYTINEN ENGINEERING FOR APPROVAL PRIOR TO FABRICATION.

K. ALL BOLT HOLE DIAMETERS SHALL BE EQUAL TO THE BOLT DIAMETER PLUS 1/16" U.N.O. BOLT HOLES FOR ANCHOR BOLTS SHALL BE EQUAL TO THE BOLT DIAMETER PLUS 1/8".

L. ANCHOR BOLTS SHALL CONFORM TO ASTM F1554, GRADE 36 AND SHALL BE HOT DIP GALVANIZED.

VII. ALUMINUM

A. INTERLOCKING SEAM ALUMINUM ROOF DECK SHALL BE ROLL FORMED FROM ALUMINUM ALLOY 3004-H151 AND SHALL CONFORM TO THE DECK PROFILE SHOWN ON THE DRAWINGS.

B. ALUMINUM ROOF DECK SHALL BE COATED WITH HEAT REFLECTIVE BASF ULTRA-COOL COATING OR APPROVED EQUAL.

C. EXTRUDED ALUMINUM RIDGE CAP SHALL BE FABRICATED FROM ALUMINUM ALLOY 6105-T5 AND SHALL CONFORM TO THE REQUIREMENTS SHOWN ON THE DRAWINGS.

D. EXTRUDED ALUMINUM FASCIA SHALL BE FABRICATED FROM ALUMINUM ALLOY 6063-T5. EXTRUDED ALUMINUM GUTTER SHALL BE FABRICATED FROM ALUMINUM ALLOY 6105-T5. ALUMINUM COMPONENTS SHALL CONFORM TO THE REQUIREMENTS SHOWN ON THE DRAWINGS.

E. EXTRUDED ALUMINUM RIDGE CAP, GUTTER, AND FASCIA SHALL BE COATED WITH ANTI-GRAFFITI POLYESTER TGIC POWDER COAT FINISH MEETING AAMA 2604-02 SPECIFICATIONS.

VIII. SCREWS

A. SCREWS SHALL BE HILTI KWIK-PRO SELF DRILLING SCREWS WITH BOND SEAL WASHERS PER ICC ESR-2198 OR APPROVED EQUAL.

B. SCREWS ATTACHING TO STEEL SHALL BE 12-24 HEX WASHER HEAD (HWH) #5 POINT SCREWS. SCREWS ATTACHING TO ALUMINUM SHALL BE 8-18 HEX WASHER HEAD (HWH) #2 POINT SCREWS.

C. ALL SCREWS SHALL BE STAINLESS STEEL OR COATED WITH ZINC.

D. THE MANUFACTURER SHALL PROVIDE A SCREW CERTIFICATION LETTER STATING THAT SCREWS PROVIDED MATCH THE SIZE AND TYPE SPECIFIED HEREIN. THE CERTIFICATION LETTER SHALL BE SUBMITTED TO THE INSPECTOR OF RECORD PRIOR TO INSTALLATION.

IX. SHOP FABRICATION AND FIELD ASSEMBLY

A. ALL STRUCTURAL STEEL AND ALUMINUM COMPONENTS SHALL BE SHOP FABRICATED SO THAT FIELD ASSEMBLY OF CONNECTIONS CAN BE PERFORMED USING ONLY BOLTING AND SCREW PLACEMENT.

X. SPECIAL INSPECTION

A. THE OWNER SHALL EMPLOY A SPECIAL INSPECTOR TO PERFORM INSPECTION OF THE CONSTRUCTION OF THIS PC IN ACCORDANCE WITH THE REQUIREMENTS OF CHAPTER 17A OF THE 2013 CALIFORNIA BUILDING CODE (PART 2, TITLE 24, C.C.R.) AND THE DIVISION OF THE STATE ARCHITECT.

XI. FIRE LIFE SAFETY

A. AN AUTOMATIC FIRE PROTECTION SYSTEM MAY BE REQUIRED FOR THIS BUILDING DEPENDING ON SITE SPECIFIC REQUIREMENTS. WHERE REQUIRED, THE AUTOMATIC FIRE PROTECTION SYSTEM SHALL BE DESIGNED BY OTHERS.

B. THE DESIGN OF THIS SHELTER IS CAPABLE OF SUPPORTING THE WEIGHT OF A FIRE SPRINKLER SYSTEM (1.5 PSF).

C. THE METAL ROOFING COMPLIES WITH FIRE CLASSIFICATION B. THIS SHELTER HAS NOT BEEN DESIGNED FOR PLACEMENT WITHIN ANY FIRE HAZARD SEVERITY ZONE.

SITE SPECIFIC OPTIONS

TO BE COMPLETED PRIOR TO PLAN CHECK SUBMITTAL.

QUANTITY OF SHELTERS AT THIS SITE

OVERALL LENGTH OF SHELTER (58'-0" MAX, 13'-0" MIN)

SHELTER EAVE HEIGHT (7'-6" MIN, 12' MAX)

COVERED AREA (928 SF MAX.)

SHELTER WIDTH

CONCRETE SLAB OR ASPHALT PAVING (BY OTHERS) OVER FOOTINGS?

ROOF DOWNSPOUTS?

ALUMINUM "V" PLUGS IN ROOF VOIDS FOR BIRD CONTROL?

☐ 10'

☐ 16'

☐ YES

☐ NO

☐ YES

☐ NO

☐ YES

☐ NO

SHEET INDEX

IT.0 ILLINI SHELTER DESIGN NOTES, EXAMPLE FORM DSA 103

IT.1 ILLINI SHELTER PLANS, SECTIONS AND DETAILS

PRE-CHECK (PC) DOCUMENT

CODE :2013 CBC

FILE NO.: PC-058

APPL. NO.: 02-113840

HYYTINEN ENGINEERING

5458 Longley Lane, Suite B

Reno, Nevada 89511

(775) 826-5019 PHONE

(775) 826-5078 FAX

REGISTERED PROFESSIONAL ENGINEER

NO. 52752

EXPIRATION DATE 12/31/14

PC

IDENTIFICATION STAMP

DIV. OF THE STATE ARCHITECT

02 113840

10' AND 16' ILLINI SHELTER

AMERICAN BUILDING PRODUCTS

#2 Industrial Dr. - Salem, IL 62881

(800)851-0865

www.americana.com

SITE ADDRESS:

SHEET TITLE:

DESIGN NOTES, EXAMPLE FORM DSA 103

DRAWN NVGI

CHECKED R.H.

DATE 10/21/14

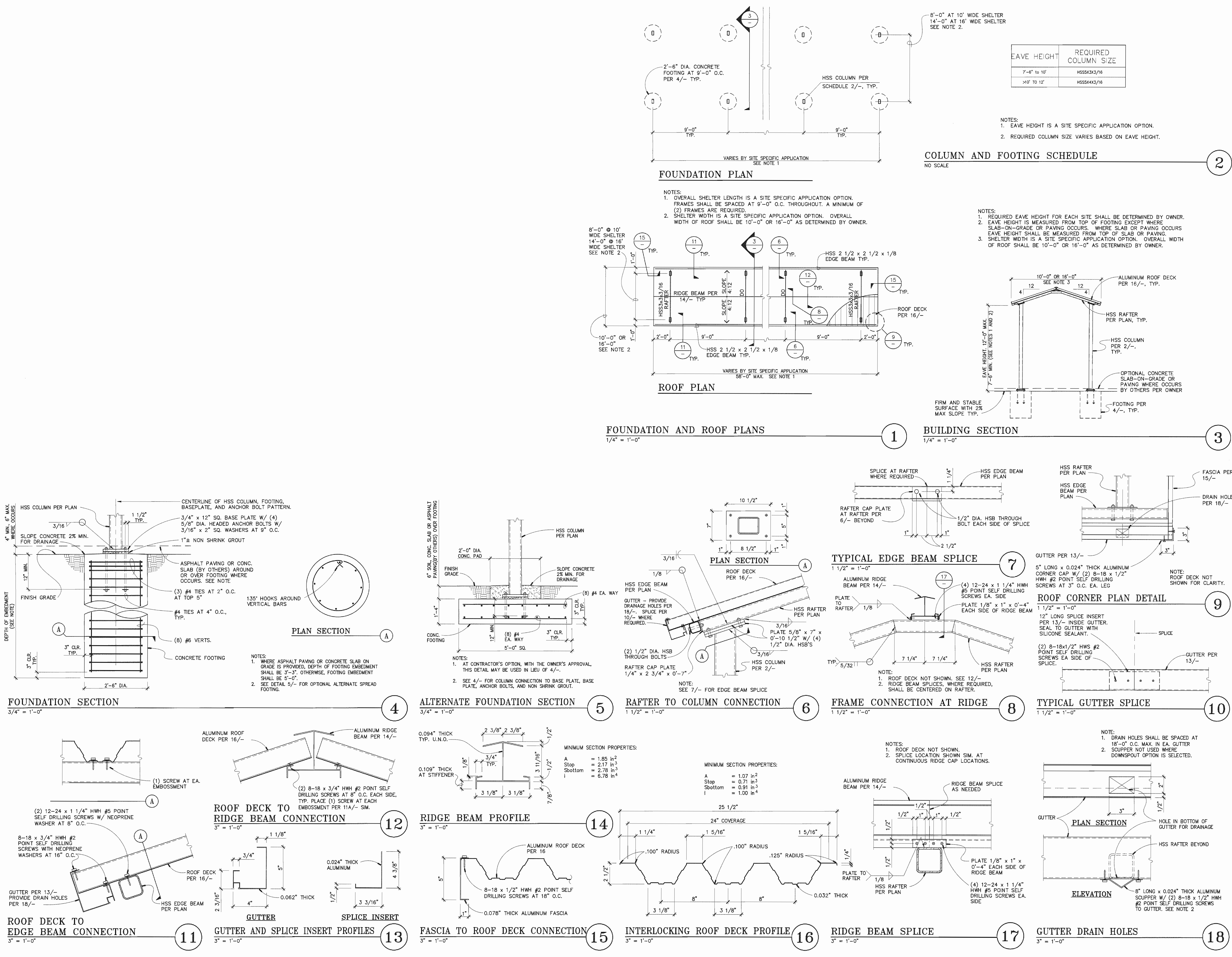
SCALE AS NOTED

JOB NO. 44-14

DRAWING NO. IT

SHEET IT.0

Copyright Hyytinen Engineering



PRE-CHECK (PC) DOCUMENT

CODE :2013 CBC

A separate project application for construction is required.

FILE NO.: PC-058

APPL. NO.: 02-113840

HYNTINEN ENGINEERING

5458 Longley Lane, Suite B

Reno, Nevada 89511

(775) 826-3079 PHONE

(775) 826-3078 FAX

REGISTERED PROFESSIONAL ENGINEER

ROGER S. HYNTINEN

NO. 52732

EXPIRATION DATE 12-31-14

STATE OF CALIFORNIA

IDENTIFICATION STAMP

DIV. OF THE STATE ARCHITECT

02 113840

ACT 14

DATE 10/24/14

PC

PROJECT:

10' and 16' ILLINI SHELTER

AMERICAN BUILDING PRODUCTS

#2 Industrial Dr. - Salem, IL 62881

(800)851-0865 www.americana.com

SITE ADDRESS:

SHEET TITLE:

PLANS, SECTIONS AND DETAILS

DRAWN NVGI

CHECKED R.H.

DATE 10/21/14

SCALE AS NOTED

JOB NO. 44-14

DRAWING NO. IT

SHEET IT.1

Copyright: Hyntinen Engineering